

# Take The Inside Out With Naturally Beautiful Shading Systems.

Designer awnings for conservatories, glass rooms and glass canopies.

***markilux***

safe timeless beautiful











## Cool in the summer, warm in the winter.

Unobstructed views into the garden in a protected environment: Conservatories and covered patios offer the best of the indoors and the outdoors. markilux designer awnings protect conservatories and glass canopies from strong sunlight and high temperatures and allow you to enjoy precious moments without limitation. Installed either on top of or below the glass roof they ensure a comfortable climate and reliable protection from glare. The high-grade textile shading systems from markilux are both elegant and robust. They reliably withstand wind and weather and provide an inviting ambience.

***markilux***

# Award-winning German design.

**markilux awnings “Made in Germany”.** As a family business in its fourth generation, we have been producing awnings for over 40 years. What makes markilux unique is the combination of designer quality awnings and the weaving of our awning covers all being done under one roof, which is why we are truly “Made in Germany” right down to the last detail. Our originality shows when it comes to making living outdoors even more enticing. We don’t stop at good solutions; we look to improve on these solutions every day. This allows us to offer the best to our customers in every respect - a perfect combination of form and function.

markilux designer awnings are characterised by quality, multi-award-winning designs and innovative technology that make your patio and balcony extra special. You can take our word for it with our markilux quality promise.

markilux designer awnings have received a multitude of awards:



## Design Features

A markilux designer awning isn't just any type of awning; it has the perfect combination of form and function. We achieve this through the interaction between our internal development team and external designers. The result: Multi-award-winning designer products for your home.



## Quality

Every detail is important during the production of our designer awnings. The high-grade materials and the comprehensive quality management system used ensure that each awning will have an extremely long service life. markilux is certified according to the DIN EN ISO 9001 standard and with this we pursue one objective: The satisfaction of our customers.



## Function

markilux combines innovative technologies and smart solutions with high-end products. With the variety of accessories available, you can enhance your markilux designer awning to suit your own requirements. The wide range of operating options guarantees you the highest degree of comfort.



## Service

Our products, combined with the competent advice of our specialists and their professional installation, make the perfect solution. Our network of qualified specialist retailers guarantees you excellent personal service and that there is always some one at hand to answer any questions you may have.









# Create your own customised space to relax in.

**Your home. Your markilux.** Would you like to shade your conservatory in a stylish manner? Are you looking for an awning for your glass canopy, which unites impressive functionality and attractive design? Then allow yourself to be inspired by markilux. With a choice from a large variety of models, and more than 250 cover patterns; you can create the markilux model that perfectly meets your requirements from numerous combination possibilities. With lighting modules and infrared heaters, as well as smart control technology you can create a comfortable, ambient space which you can enjoy all year round.



**Perfect solutions** Nothing is impossible. Together with our specialist retailers you will find the perfect solution to any requirement.



**Textile ambience** markilux offers more than 250 timelessly beautiful patterns in the highest quality – the decision is yours.



**Excellent design** markilux has the awning that matches your home both from the outside and the inside.

***markilux***



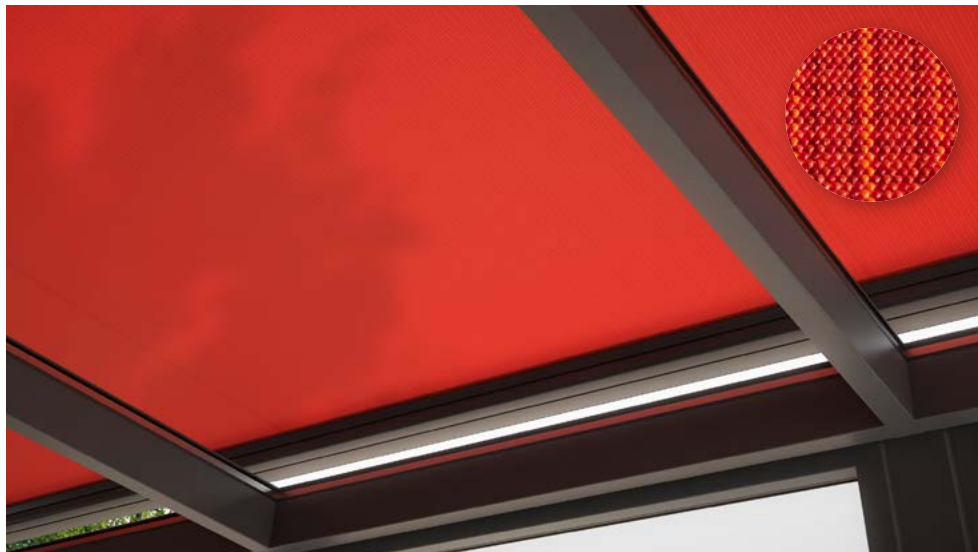




# The most attractive fabrics under the sun.

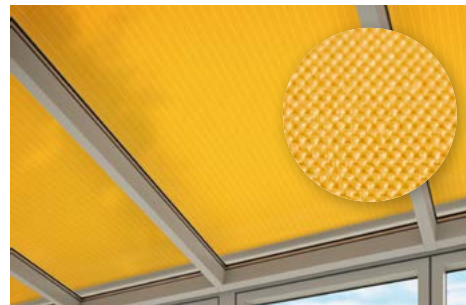
**Our unique covers help to create a special ambience for you.** The colour and quality of the awning fabric is what helps make the ambience in your conservatory and on your patio something special. Depending on the brightness and hue, the colour shade, pattern and texture help create that unique special effect. As a leading manufacturer of high-grade awning fabrics with almost 100 years of experience in the manufacturing of textiles, markilux has an unparalleled variety on offer. The markilux textile design team are constantly developing new patterns in line with the latest trends, which are characterised nevertheless by their timeless nature. Within the 250+ patterns in thematically coordinated colour families, you are certain to find your very own unique fabric.

## VISUTEX



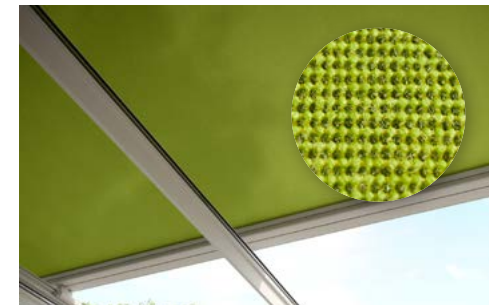
**The markilux exclusive collection** Discover the subtle, balanced textures and powerful colours of a stunning textured weaving technique. These unique awning fabrics are available exclusively and without any surcharge only from markilux.

## SUNSIK



**Brilliant luminosity. Silky smooth surface.** sunsilk awning covers impress with their unique and intense luminosity.

## SUNVAS



**Soft glow. Textile-like to the touch.** sunvas awning covers score with their textile character and natural appearance.



# Functional and beautiful.

**Awning covers “Made in Germany”.** We manufacture awning covers that maintain their shape and colour for years, and offer your patios and balconies that special something. These high-tech awning fabrics are produced at our manufacturing facility in Emsdetten, Germany in accordance to strict quality standards. The yarns are dyed using a process we have developed and show their effect in up to 16 million distinctive colours with outstanding luminosity and colour intensity. This has resulted in functional textiles, which have set exceptionally high standards in terms of quality, UV protection, ease of care and appearance. markilux awning covers are available in the qualities “sunsilk” or “sunvas” or as fabrics in our markilux specials collection serving specific requirements.

## Specials collection



**transolair** Solar protection with a view. The sunvas fabric with special perforating technique stands for comfortable transparency and good light and air permeability. Air can circulate between the cover and the window. This effectively reduces the build-up of heat.



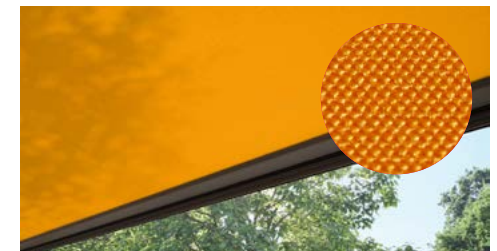
**perfortex** Ideal for conservatories. The aluminium coating reduces heat gain as a result of infra-red radiation. Gaps in the warp, woven into the fabric, make the material permeable to both air and water.



**vuscreen ALU** Solar protection with added functionality. It has been woven with an openness of 3% thus allowing an excellent view outside. The aluminium particles encapsulated in the coating make it particularly effective at reflecting the sun's rays.



**perla** The highly water-repellent sunvas fabric is an effective protection against both sun and rain.



**perla FR** The flame-resistant and water-repellent sunsilk fabric complies with stricter fire retardancy regulations.





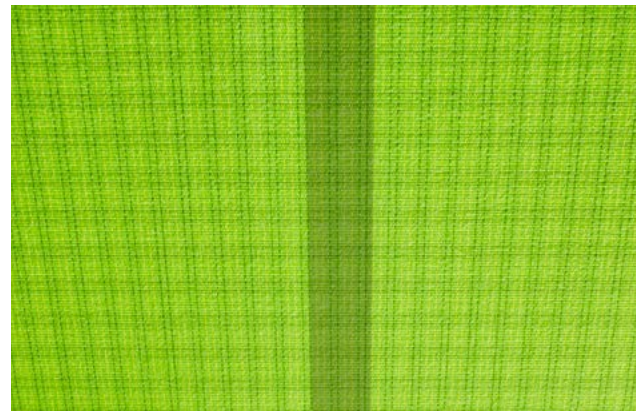
**markilux sunsilk and sunvas.** During the production of our awning fabrics we leave nothing to chance. We produce our fabrics entirely in Germany using the most modern weaving technology. We add a final touch to the fabric using our snc-finish, a special formula developed in-house that creates a self-cleaning effect. This finish gives our awning covers incredible longevity and resistance against rain, ultraviolet light and fluctuations in temperature. They are certified according to Oeko-Tex standard 100 and this guarantees that they are free from harmful dyes or chemicals.

With an Ultraviolet Protection Factor (UPF) of 50+, all markings awning covers made from sunsilk or sunvas offer the highest possible degree of UV protection. This allows you to enjoy sunny days for longer, without the risk.\*

**He who seeks shall find** The most beautiful fabric for your designer awning can be found amongst the 250+ cover patterns at your markilux specialist dealer's showroom or at [markilux.com](http://markilux.com)



**Self-cleaning snc-effect** Water droplets pick up dirt particles and run off the awning cover (a pitch of at least 14 degrees of the awning is required). This allows you to relax, knowing that your fabric will maintain its colour and vibrancy for years to come without you having to lift a finger.



**Bonded awning covers** Panel joints bonded together ultrasonically ensure a consistent appearance. Excellent resistance to water, light and fluctuations in temperature ensures that the life of the cover is substantially extended.



**Light, weather and colour fastness** Expertly dyed high-tech yarns and a high-grade finish developed in house guarantee the most beautiful shade in which to relax for years to come.

\* Protect your skin with care! Do not spend longer periods outside without applying sun cream. The UPF afforded by the awning applies only to direct sunlight. It offers no protection against reflected sunlight (e.g. From water).



# Turn your imagination into reality with our range of stunning frame colours.

**Choose from our extensive collection of colours.** Choose the awning frame colour to complement the colour of the fabric and create your own amazing design. From various shades of white through to the elegant shades of anthracite, a wide range of colours is available to you. Do you want a particular colour scheme? No problem! We will gladly manufacture your dream awning in your own personal shade of colour. Our high-grade powder coating is guaranteed on any awning colour you choose.



Traffic white

RAL 9016



Off-white textured finish

5233



Metallic aluminium

RAL 9006



Stone grey metallic

5215



Anthracite metallic

5204



Grey brown

RAL 8019



Havana brown textured finish

5229



RAL colour of your choice







# Intelligent solutions designed with functionality.

**Perfect functionality is more than the sum of all the fine details.** markilux designer awnings are made for problem free use, even in difficult weather conditions. We are continuously working on the development of new, even better solutions so we can always offer our customers the best possible quality. Without exception, we use materials and technologies that meet the strictest of requirements so you can enjoy your markilux awning for the longest possible time.



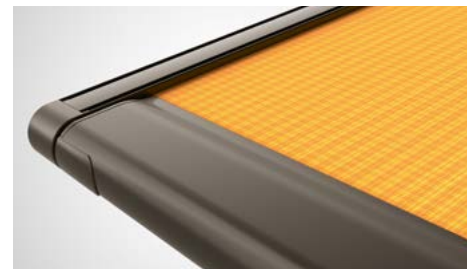
**Coupled unit** An extensive range of brackets allows several units to be installed next to one another – creating XXL shading solutions.



**Compact square enclosed cassette**  
For those of you who prefer a clean design.



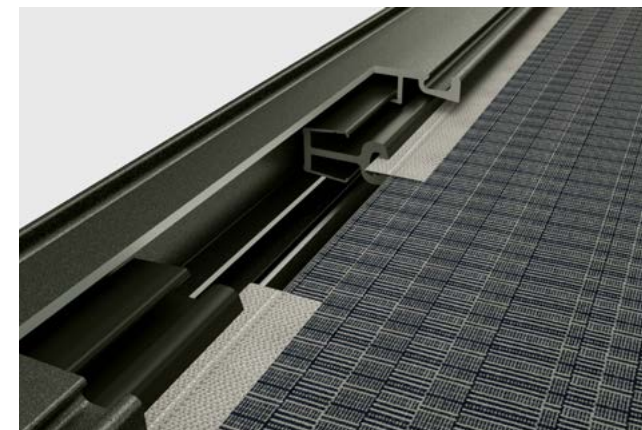
**Elegant round enclosed cassettes**  
For those who love flowing lines.



**Flush front profile** Completely extended it finishes flush with the guide tracks.



**Decorative covers and profiles for guide tracks**  
Optionally complement the design, depending on the model.



**markilux tracfix** One of the many sophisticated features markilux offers: lateral cover guidance with no gap between the awning cover and guide track. For a more beautiful overall appearance and better wind stability.

**Perfect cover fit** High cover tension is achieved by two special gas-pistons operating independently in the front profile. In the markilux 780/880 the proven vario belt tensioning system provides the cover tension. markilux designer awnings for conservatories feature very quiet noise-reducing closing guides that ensure the awning retracts quietly.

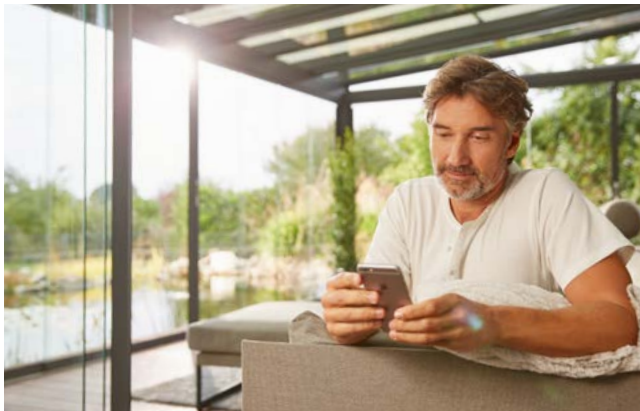






# Touch-button or automatic operation. So easy.

**Controlling your solar shading has never been more simple.** The choice is yours: manual operation, hard-wired motor or radio-controlled motor with remote control are all possible on most models. You can even operate the system while you are away via smartphone or tablet. Better yet, why not put your feet up and add sun, wind and rain sensors to provide automatic intelligent control of your markilux designer awning? Your markilux dealer retailer is at your disposal should you have any questions regarding the operation of your markilux solar protection system and will provide you with details on how you can link several individual units and operate them all with the touch of just one button.



**Home automation** Easily control your vertical blinds via smartphone or tablet – even when you are away from home. The smart control function with io technology via the app makes it possible.



**Intelligent control** With sun, wind and rain sensors, your markilux system can react to any changes in the weather. In sunny conditions the vertical blinds will extend automatically and in wind and rain they will retract.



**markilux radio-controlled motor** Perfect protection from the sun, inquisitive glances and glare comfortably at the touch of a button.

**markilux 870 / 879** Whether installed above the glass surface of your conservatory (870) or as an underglass awning (879) for your glass canopy – discover the broad range of possibilities.



# Models and options







# Your very own comfortably cool conservatory.

**markilux 8800** Excellent solar protection for up to 36 m<sup>2</sup> with only one cover. Even larger glass surfaces can easily be shaded with a coupled unit.

**Conservatory glass top awnings.** Enjoy life in the conservatory even on the hottest of days. Your markilux awning fitted above the glass reflects glaring sunlight; ultraviolet light as well as heat radiation and at the same time immerses your conservatory in natural daylight. The heat remains outside while you enjoy being inside. Whether small or large glass areas, classic or hipped roofs – enjoy comfortable temperatures, spare yourself the cost of having to switch on an AC unit and create your very own dream conservatory.



**Excellent design** Elegant and functional. The enclosed cassettes of the markilux 8800 and 8850 protect the cover in wind and weather.

**Perfect for hipped roofs** The lateral guide tracks of the markilux 8850 can be indented by up to 100cm.













**markilux 870** Shade up to 400cm x 400cm in a stylish manner and enjoy the comfort and the quality of markilux for many years.

**markilux 770** Both this square awning for installation on the glass surface and it's round counterpart the markilux 870, are very quiet. Noise-reducing closing guides ensure the awning retracts quietly.



**Square. Practical. Unobtrusive.**

Exceptionally compact at only 125 x 125 mm the square full cassette of the markilux 770 fully protects the awning cover.



**A round matter** With a diameter of 130 mm, the cassette of the markilux 870 harmoniously nestles against the conservatory and provides all-round protection to the retracted cover.



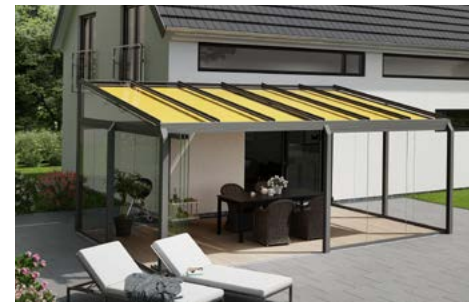
**markilux 780 / 880** The economical solution for small areas. The vario-belt tensioning system provides optimum cover tension up to Beaufort 6. Individual units mounted directly next to one another can be operated simultaneously.



# The perfect accessory for your glass canopy.

**markilux 879** The round counterpart to the markilux 779 for all who prefer flowing, softer shapes.

**Underglass awnings for glass canopies.** Spend the day outside in your own garden below a markilux designer awning that promises the best protection from too much sun, and helps create your very own cosy outdoor area. The cover is extended underneath the glass canopy so it is protected from dirt, wind and weather. All markilux underglass awnings impress with their compact enclosed cassettes that blend harmoniously into the glass canopy. A variety of lighting options are available to allow you to perfect the ambience in the evening. Discover the options available on page 26.



**markilux 780 / 880** The economical solution for small areas. The vario-belt tensioning system provides optimum cover tension up to Beaufort 6. Individual units mounted directly next to one another can be operated simultaneously.



**markilux roof festoon** Developed specifically for use in indoor spaces and creates a pleasant light atmosphere.

**markilux 779** The robust, fully enclosed cassette comes with a variety of lighting options. Up to 600cm wide and with an extension of up to 450cm or up to 400 cm in width with an extension of 600 cm.







# Let there be light.

## Optional LED lighting for the underglass awnings markilux 779 and 879



**LED spotlights fitted to the cover support tube** Put your favourite spot skilfully in the limelight and enjoy the evening in a pleasantly lit atmosphere. They can be dimmed and pivoted. With the markilux 779, they can also be mounted to the cassette.



**LED line in guide tracks and cover support tube** Energy efficient, stylish and, like all markilux lighting modules, comfortably dimmable by means of remote control.



**Discreet cable conduit** markilux designer awning with attention to detail: The cables in all lighting options are discreetly hidden and masked in a sleek stylish manner.

**Pleasant, light-filled atmosphere** Does your day at home only really start in the evening? If so, enjoy using your patio then with one of the markilux lighting options that give a cozy, pleasantly lit atmosphere.







# Round off your outdoor living area with a touch of light and warmth.

markilux extras for conservatories and glass canopies.



**markilux panoramic windows** Would you like to be able to sit outside below your glass canopy protected from the wind and rain, but still be able to enjoy the view outside? For the vertical cassette blinds markilux 776 and 876 with tracfix, we offer you the markilux panoramic window. Max. awning dimensions 600 cm x 300 cm. Max. height of the panoramic window approx. 135 cm.



**Side screen markilux 790** Protects against low-lying sun and wind from the side, as well as stopping prying eyes. Height max. 250 cm. Extension max. 450 cm.



**markilux infra-red heater** Feel the warmth immediately and enjoy the evening for longer. Protected in a robust, sealed housing. Available in 1400 W or 2000 W.



**markilux spotlight LED** Turns the night into day. The elegant, freely mountable light bar in the powder-coated housing. LED spotlights, pivoting and dimmable, adjustable light temperature, available in 3 lengths: 120 cm / 180 cm / 300 cm.



**markilux hotspot** Create a warm, light-filled atmosphere until late at night. Four halogen and two infra-red heaters perfectly united and protected in a powder-coated housing. Available in the same colour as the awning and mounted precisely where you wish and freely mountable. Length: 300cm.



**Vertical designer blinds for conservatories and glass canopies** Simply mask out glances and low-lying sun. Sit protected from the wind and rain. Enjoy the warmth of the day for longer. Adding vertical designer blinds from markilux make your outdoor private room perfect.

**Design your very own outdoors** markilux offers the best in outdoor living comfort. Your markilux specialist dealer will competently provide you with details about the possibilities available to you or alternatively, or refer to [markilux.com](https://www.markilux.com)





## Conservatory awnings for installation on top of the glass

markilux 8800



markilux 8850



markilux 770 tracfix



markilux 870 tracfix



<b>Max. width × projection</b>	700 × 450 cm / 500 × 700 cm 600 × 450 cm / 500 × 600 cm tracfix	650 × 400 cm 500 × 500 cm	400 × 400 cm (tracfix)	400 × 400 cm (tracfix)
<b>Cassette dimensions</b>	Ø 187 mm	Ø 187 mm	125 × 125 mm	Ø 130 mm
<b>Operation type</b> optional	<b>Motor</b> radio-controlled motor* silentec motor	<b>Motor</b> radio-controlled motor*	<b>Motor</b> radio-controlled motor*	<b>Motor</b> radio-controlled motor*
<b>Cover guidance</b>	<b>Guide tracks</b>	<b>Guide tracks</b>	<b>Guide tracks (tracfix)</b>	<b>Guide tracks (tracfix)</b>
<b>Cover tension</b>	<b>Gas pistons</b>	<b>Gas pistons</b>	<b>Gas pistons</b>	<b>Gas pistons</b>
<b>Wind resistance class</b>	<b>3</b>	<b>2</b>	<b>3</b>	<b>3</b>
Beaufort force / wind speed	6 → 38 – 48 km/h 6 → 24 – 30 mph	5 → 28 – 37 km/h 5 → 17 – 23 mph	6 → 38 – 48 km/h 6 → 24 – 30 mph	6 → 38 – 48 km/h 6 → 24 – 30 mph
<b>Options **</b>	tracfix coupled unit			



## Awnings for installation on top of the glass

## Underglass awnings for glass canopies

## Indoor solar protection

markilux 780



markilux 880



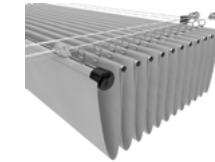
markilux 779



markilux 879



markilux Roof Festoon



400 × 250 cm 325 × 400 cm	400 × 250 cm 325 × 400 cm	600 × 450 cm / 400 × 600 cm 600 × 400 cm (tracfix)	600 × 450 cm / 400 × 600 cm 600 × 400 cm (tracfix)	400 × 422 cm 200 × 610 cm
95 × 95 mm	Ø 115 mm	125 × 125 mm	Ø 130 mm	—
<b>Manual operation</b> (only underglass) motor radio-controlled motor*	<b>Manual operation</b> (only underglass) motor radio-controlled motor*	<b>Manual operation</b> motor radio-controlled motor*	<b>Manual operation</b> motor radio-controlled motor*	<b>Cord pulley system</b> operating rod (up to 100 cm width)
<b>Guide tracks</b>	<b>Guide tracks</b>	<b>Guide tracks</b>	<b>Guide tracks</b>	<b>Stainless steel wire</b>
<b>Vario-belt tensioning system</b>	<b>Vario-belt tensioning system</b>	<b>Gas pistons</b>	<b>Gas pistons</b>	—
<b>3</b> 6 → 38 – 48 km/h 6 → 24 – 30 mph	<b>3</b> 6 → 38 – 48 km/h 6 → 24 – 30 mph	<b>2 – 3 depending on size / 3 with tracfix</b> 5 – 6 → 28 – 48 km/h 5 – 6 → 17 – 30 mph	<b>2 – 3 depending on size / 3 with tracfix</b> 5 – 6 → 28 – 48 km/h 5 – 6 → 17 – 30 mph	—
cover profiles for lateral cover gaps	cover profiles for lateral cover gaps	LED spotlights on the cassette and / or on the cover support tube LED line on the guide tracks and / or in the cover support tube tracfix	LED spotlights on the cover support tube LED line on the guide tracks and / or in the cover support tube tracfix	

**markilux**



Ideas, detailed information, professional advice and beautiful awning cover patterns can be found in your specialist dealer's showroom and at [markilux.com](http://markilux.com)

[markilux.com](http://markilux.com)

***markilux***  
safe timeless beautiful