

# *world of colours*

markilux collection



***markilux***

# markilux Products

Experience and knowledge by tradition. Ideas and creativity for the future.



## Design features

markilux products are designed to be timeless. Trendy and classic lines united in the perfect products for your home. Reputable designers have created beauty in both the technological and the textile.

## Innovation

markilux awnings did not get to where they are by chance. In each of our products you will find technical innovations crafted for a particular application. We try to anticipate the requirements of tomorrow and satisfy them today.

## Dynamics

markilux developments are dynamic. We think well ahead as markilux clients should be able to enjoy our products for many years to come. Many of the ideas we have can be retro-fitted to already existing products. This makes our products very long-lasting indeed.





### Function

markilux technology is designed to last for a small eternity. The materials used meet the highest standards thus ensuring problem-free operation for many years.

### Safety

Certified quality from a certified company; independent bodies audit us and document our commitment to quality. The inimitability of our manufacturing facility, textile production and awning construction within one single company leads to the creation of products that leave nothing to be desired.

### Service

markilux - dedicated to craftsmanship. markilux Specialist Dealers are experts when it comes to the sale and installation of awnings. We support these businesses with training and the transfer of know how.

### Contents

---

Awning covers by markilux .....	4	specials.....	ab 36
visutex – available exclusively at markilux .....	6 – 13	perfortex .....	36 – 37
visutex – Tango .....	14 – 15	sunvas transolair .....	38 – 39
sunsilk snc .....	16 – 21	sunsilk perla FR .....	40
sunvas snc .....	22 – 28	sunvas perla .....	41
colours .....	29	vuscreen ALU .....	42
classics .....	30 – 33		
Braid colours / Valance styles .....	34 – 35	Product characteristics and care .....	43





Blind and Awning Covers by [markilux](#)



## markilux awning covers – are highly rated because of their quality and appearance

With the purchase of a markilux awning cover you have chosen a high-class, quality product. All fabrics are produced on state-of-the-art weaving looms. This guarantees near perfection in the manufacturing process. Meticulous checks also ensure that we only ever supply functionally flawless covers.

However, awning covers do not only serve as effective protection from the sun. They also have a decisive impact on the colour ambience and hence the atmosphere under an awning. For even greater enjoyment of the colour ambience provided by the shade of an awning, markilux offers an extensive collection of more than 250 fabrics made from the innovative, high-tech polyester yarns sunvas snc and sunsilk snc.



sunsilk snc and sunvas snc – the innovative awning fabrics with self-cleaning effect in rain (a minimum awning pitch of 14° is required to ensure water drainage). The high-quality, dirt-repelling coating makes sure you can enjoy the luminous colours in the fabric for many years. Tried, tested and certified with the test symbol "self-cleaning – inspired by nature" which

was awarded and confirmed by the internationally renowned Institute for Textile Technology and Process Engineering (ITV), Denkendorf.



The certificate "Öko Tex Standard 100" guarantees that no harmful dyes or

chemicals were used in the making of markilux awning covers (sunsilk snc / sunvas snc).



### Effective protection against UV radiation

Due to the increasing strength of UV radiation, healthcare during our leisure time is gain-

ing in importance. Therefore it is important to know just how many harmful UVA and UVB rays will pass through the cover when purchasing an awning. markilux fabrics in dark colours afford 100 per cent protection. The lighter colours (right through to plain white) stop up to 97 per cent of UV radiation.

These figures are based on research conducted by the Hohenstein Research Institute as well as the manufacturer of our fabric yarns.

### All fabrics made of sunsilk snc and sunvas snc achieve the highest possible solar protection factor for textiles (UPF 50+).

The UPF (Ultraviolet Protection Factor) specifies how much longer one can be exposed to sunlight when protected from it by the given UPF without suffering sunburn. Fabrics with an ultraviolet protection factor of 50+ would enable you to sit out safely in the sun fifty times longer than you would otherwise be able to do without suffering sunburn, if you were to rely solely on the protection provided by your skin.

In order to determine the sun protection factor required, you need to know what level of protection is provided by your own skin, as well as the length of time you wish to sit in the sun (your own protection time x sun protection factor = maximum sunbathing time). In so doing it is essential to bear in mind that the sun protection (awning) fabric is only able to reduce the effect of direct sunlight and not that resulting from reflected UV radiation (from water, for example).

### Superior light and weather fastness values

Our covers made from sunsilk snc and sunvas snc get the best values

(marks 7 to 8) when rating their lightfastness and weather resistance.



### Bonded seams lend awning covers an improved appearance

The ultrasonic bonding process lends the cover a vastly improved appearance. It has been tested for its durability. The high compression bonding process offers many advantages: Under normal conditions the panel joints (formerly seams) are impermeable to light and water and resistant to changes in temperature. Thanks to its smoother surface, the fabric has a longer life-span. In addition bonding avoids the problem of premature ageing of the thread as a result of UV radiation and weathering. Generally speaking we supply all our blinds and awnings with bonded covers. However, the perfortex range and fabrics supplied by third parties continue to be stitched for technical reasons. So, if you would prefer your awning cover to be produced with the conventional stitched finish, we kindly request you to state this clearly on your order. Both stitched and bonded

awning fabrics show inevitable differences in colour at the seams and panel joints due to the double layer of fabric - the fabric appears to be darker at this point.

All widths quoted are unworked fabric widths. Please consult the current sales manual or price list for the maximum awning / blind sizes available in the different fabric qualities.

### sunsilk snc the brilliantly luminous technical material

Because of their superior luminosity and brilliance the sunsilk materials can best be viewed against the light as in the illustrations shown.

### sunvas snc the softly glowing textile material

The illustrations show sunvas fabrics when lit from the front.

Your markilux dealer will make the whole markilux collection available to you. We recommend you assess the lighting effect created by awning fabrics both when backlit and when lit from the front. The actual fabric colours may differ slightly from those depicted. Printed is not woven.

visutex – available exclusively at markilux

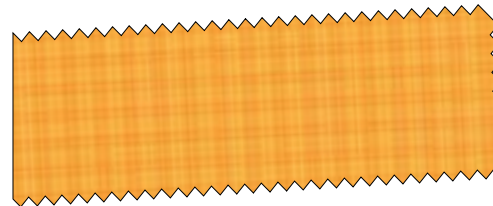


**Exclusivity at no extra cost**  
**The visutex collection**

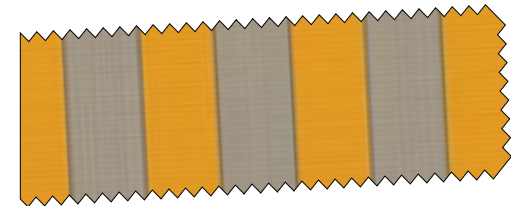
**The stylists at markilux have developed the visutex collection to cater specifically to exacting tastes.**

visutex is stylishly modern design embodied in a vividly textured weaving technique. It delicately reflects the colours and textures of patio and garden. Eight vibrant colour families and elegant patterns lend the fabrics, designed exclusively for markilux, a unique signature. Radiant and brilliant in the sunsilk snc quality and gently glowing in the new sunvas snc version.

yellow\_summery, stimulating, sunny, refreshing, carefree, warm, exhilarating, luminous, uplifting, appealing



***sunvas*** 31471



***sunsilk*** 36995



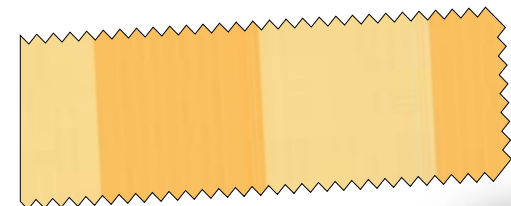
***sunsilk*** 36923



***sunvas*** 31481



***sunsilk*** 36917



***sunvas*** 31401

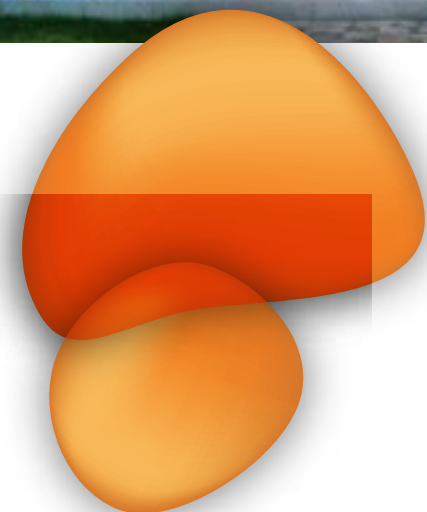
***visutex***



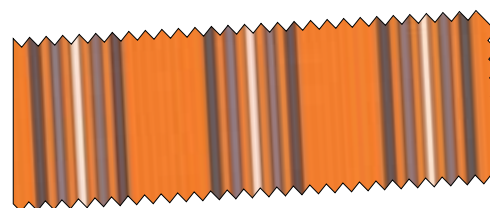




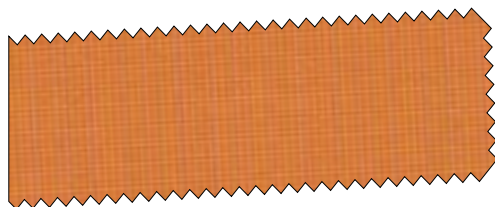
Energy



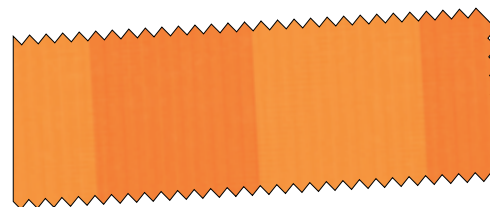
**sunvas** 31482 ♦♦



**sunsilk** 36922



**sunvas** 31472



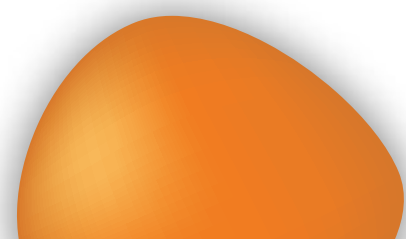
**sunvas** 31402



**sunsilk** 36977

**orange\_energised**, modern, intensive, cheerful, eye-catching, fruity, youthful, radiating, stimulating, summery

- fabric also available as sunvas transolair; see the specials range – sunvas transolair
- ♦ also available as widely woven fabrics for the manufacture of seamless covers up to a drop of 230 cm

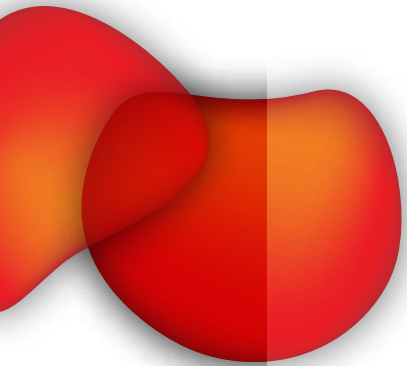
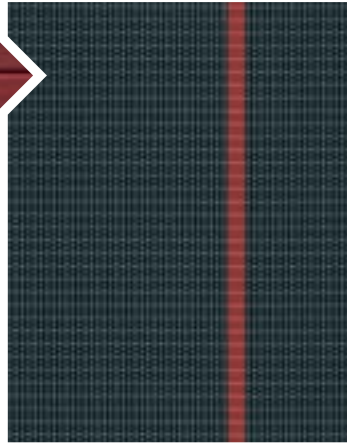


**markilux**

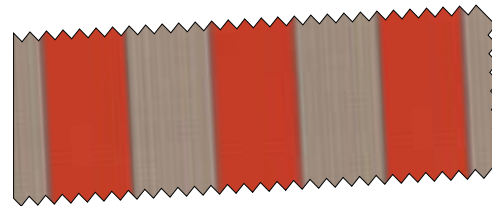




Emotion



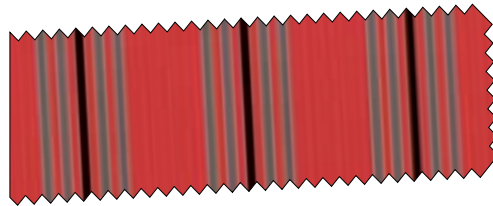
**sunsilk** 36920



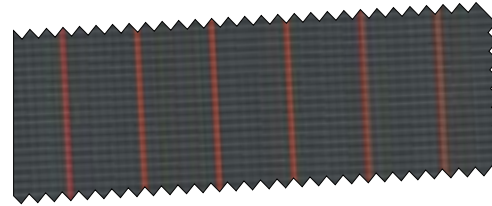
**sunsilk** 36984



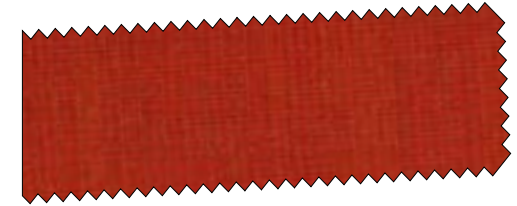
**sunvas** 31403



**sunsilk** 36921



**sunsilk** 36994



**sunvas** 31483 ♦♦

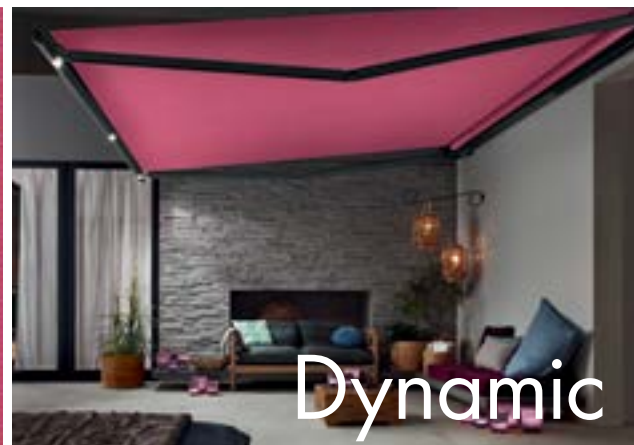
red\_luminescent, active, warming,  
fiery, powerful, emotional,  
striking, conspicuous,  
impulsive, affectionate, strong

**visutex**

• fabric also available as sunvas  
transolair; see the specials range  
– sunvas transolair

♦ also available as widely woven  
fabrics for the manufacture of seam-  
less covers up to a drop of 230 cm

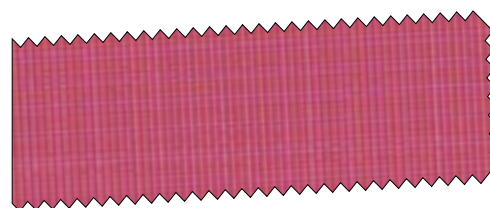




**Dynamic**



***sunsilk*** 36979

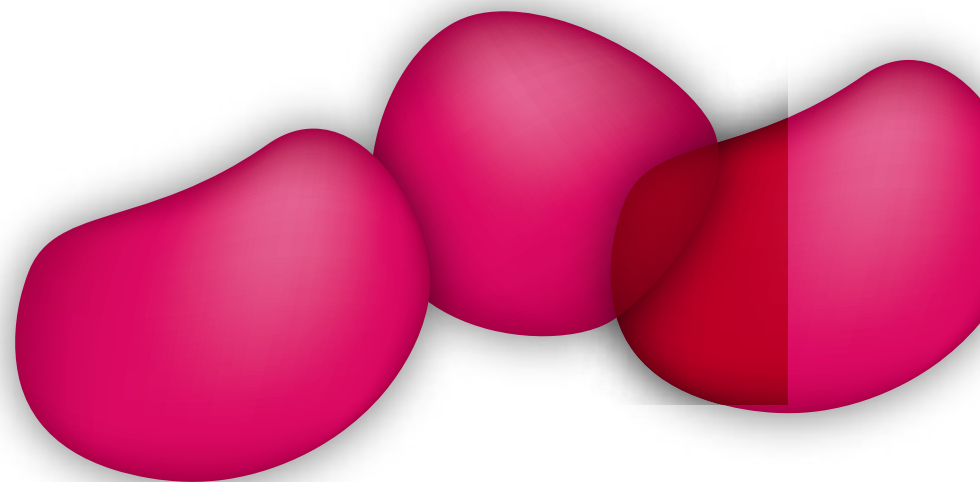
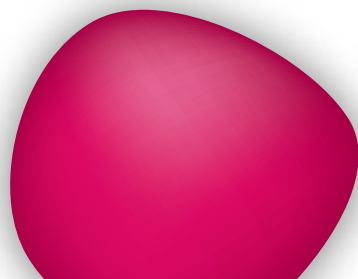
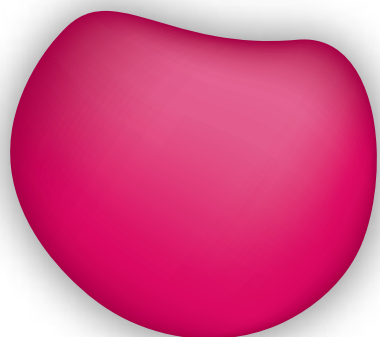


***sunvas*** 31474



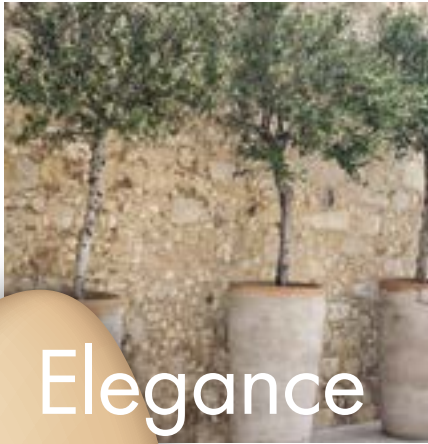
***sunvas*** 31414

**pink\_dynamic**, trendy, individual, exciting, positive, ostentatious, creative, expressive, chic, positive, feminine, magical, explosive



***markilux***

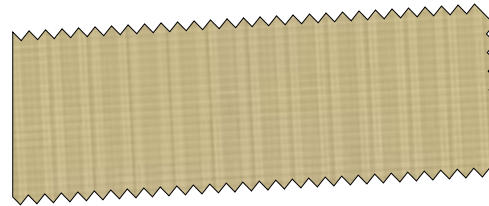




# Elegance



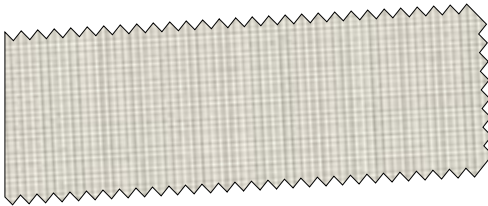
**sunvas** 31427 ♦



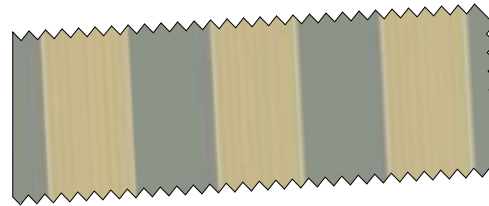
**sunsilk** 36969



**sunvas** 31407



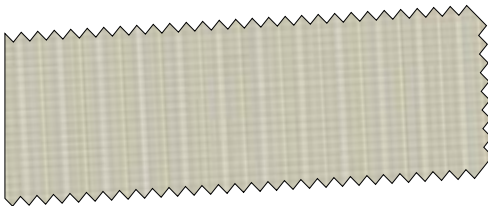
**sunvas** 31479



**sunsilk** 36952



**sunvas** 31417



**sunsilk** 36919



**sunvas** 31487 ♦♦



**sunvas** 31408

**cream**\_soft, tender, light, natural, bright, calm, friendly, plain, elegant, appetising, peaceful, popular, insensitive

• fabric also available as sunvas transolair; see the specials range – sunvas transolair

♦ also available as widely woven fabrics for the manufacture of seamless covers up to a drop of 230 cm





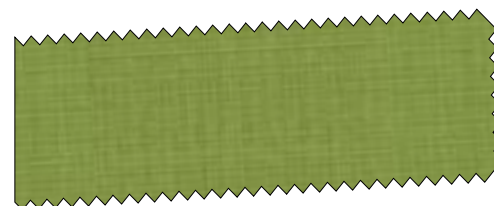
**green\_** natural, juicy, fresh, hopeful, calming, cool, relaxing, enduring, healthy, verdant, curing

- fabric also available as sunvas transolair; see the specials range – sunvas transolair

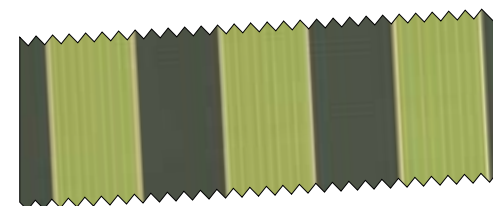
- ♦ also available as widely woven fabrics for the manufacture of seamless covers up to a drop of 230 cm



**sunvas** 31416



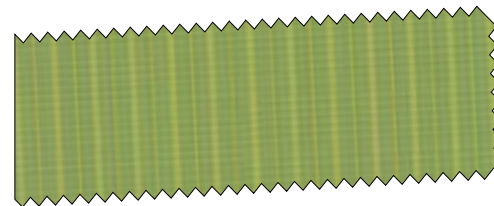
**sunvas** 31486 ♦♦



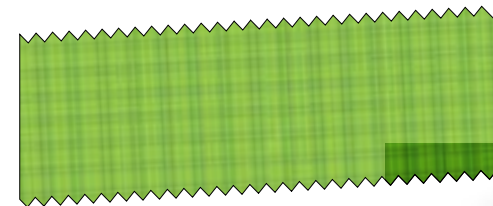
**sunsilk** 36997



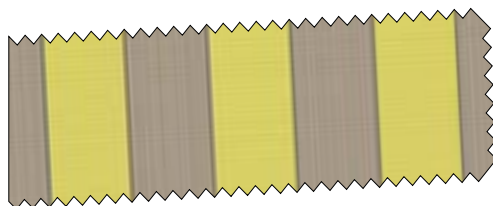
**sunvas** 31406



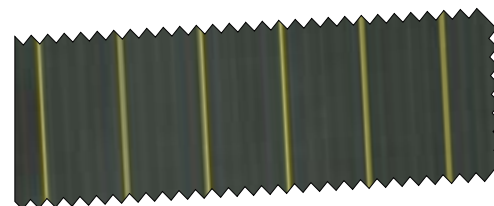
**sunsilk** 36916



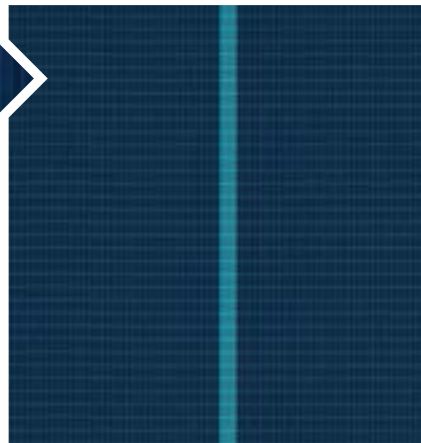
**sunvas** 31476



**sunsilk** 36996



**sunsilk** 36978



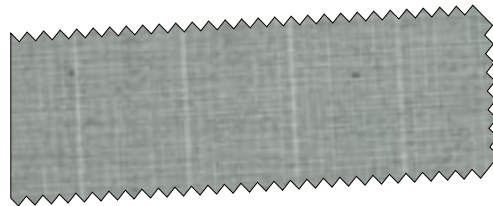
**sunsilk** 36975

**blue**\_harmonious, levitating,  
benevolent, rational, heavenly,  
refreshing, calming, cool, vast,  
peaceful, distant, safe

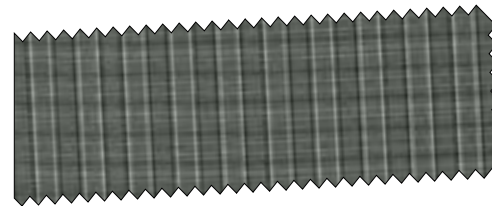




**black\_strong**, powerful, design-orientated, functional, exclusive, no-nonsense, individual, elegant, dignified, architectural



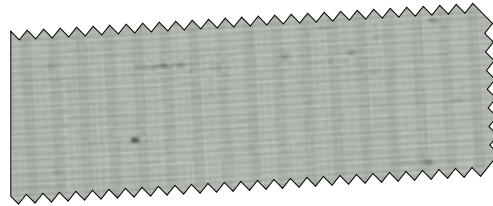
***sunvas*** 31488



***sunvas*** 31423



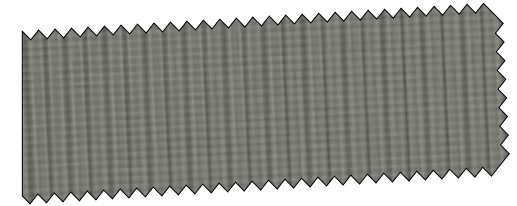
***sunvas*** 31418



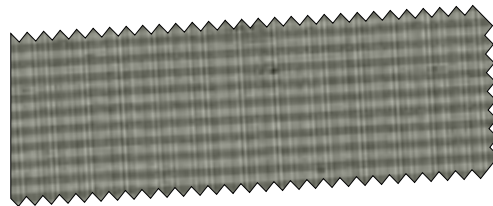
***sunvas*** 31421



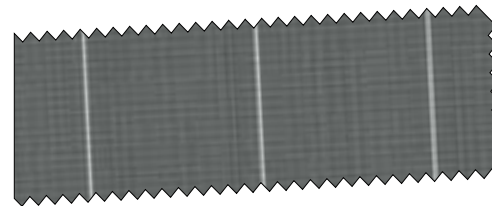
***sunvas*** 31425



***sunsilk*** 36988



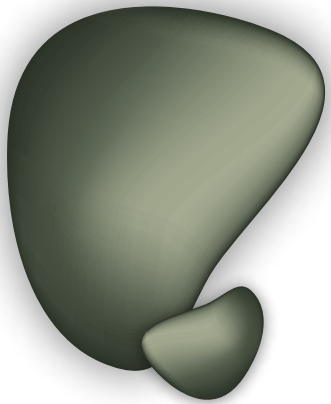
***sunvas*** 31422



***sunvas*** 31424



***sunvas*** 31478





# *visutex Tango*

Harmony woven in the rhythm of time. Expressive and vivacious, whether in soft stripes or classic checks with a depth of contrast.

visutex Tango are covers that reflect a modern lifestyle and stand out by virtue of the shade they provide.



Harmony experienced. A perception of space. A touch of summer. A new heaven on earth: sunny, refreshing and warm.



Colourful trend. Individual and exciting. Positive, creative, expressive. Magical highlights both above and in your head.



The fabric – a dream. The tone – naturally green. It lends lightness to the awning, weight to the balcony or patio.

# *visutex*



**sunvas** 31494

**visutex Tango**



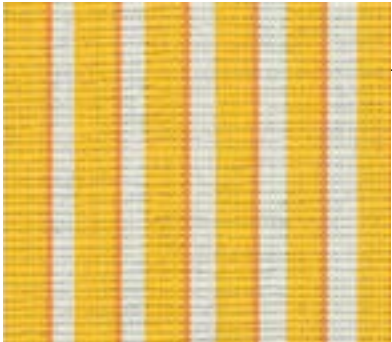
**sunvas** 31493

**visutex Tango**

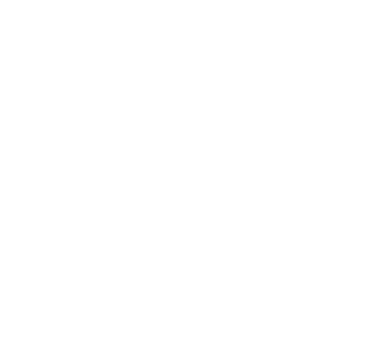


**sunvas** 31492

**visutex Tango**



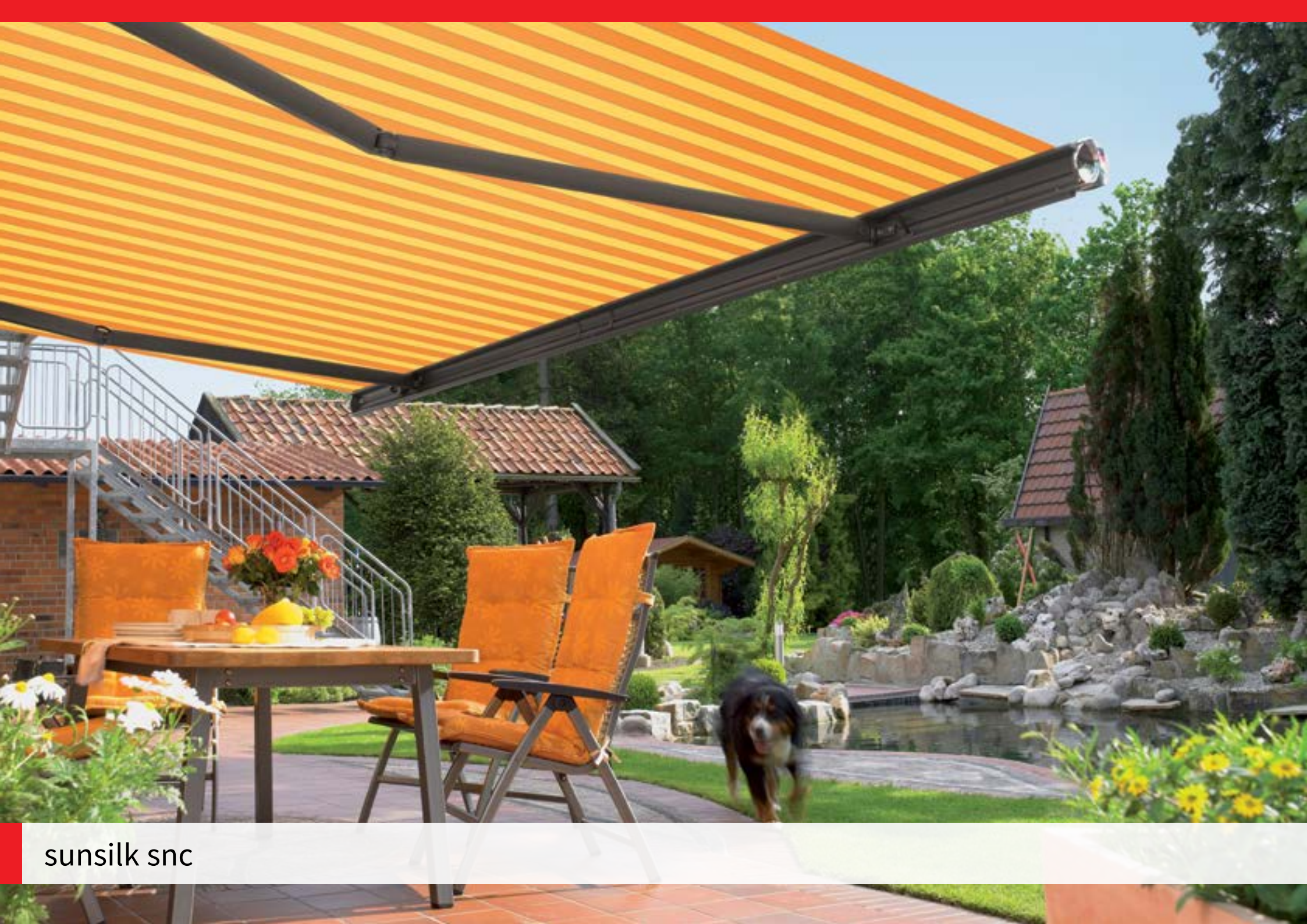
**sunvas** 31427



**sunvas** 31425

Because visutex Tango awning covers are made up of two different fabric patterns, minor variations in colour between the individual fabric panels cannot be avoided. The outer, striped panels (A) are used in their full width, whereas the plain fabric panels (B) in between can vary in both number and width.





sunsilk snc



*world of colours: yellow*

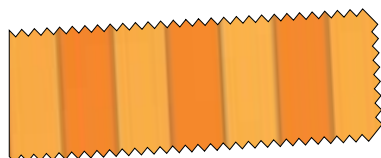
brilliant luminosity  
smooth surface  
excellent technical properties

*summery*

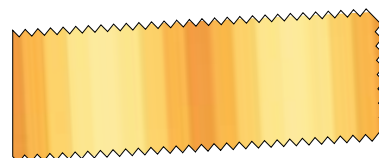


**sunsilk snc**

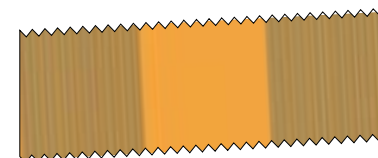
Seven summery and fresh colour families and delicate tone-in-tone fabric patterns emphasise the clear design concept behind sunsilk snc. They lend the transparent material, made of enhanced, high-tech polyester with its typical, brilliant luminescence, a new and exciting appeal. Tried, tested and certified with the test symbol "self-cleaning - inspired by nature" which was awarded and confirmed by the internationally renowned Institute for Textile Technology and Process Engineering - ITV, Denkendorf.



*sunsilk* 32871



*sunsilk* 32851



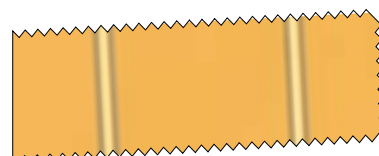
*sunsilk* 32811



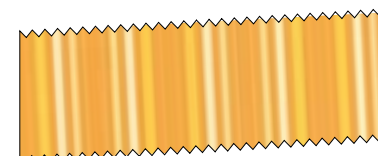
*sunsilk* 32861



*sunsilk* 32879



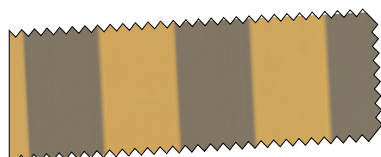
*sunsilk* 32850



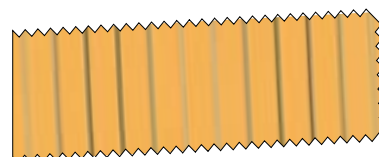
*sunsilk* 32822



*sunsilk* 32859



*sunsilk* 32801



*sunsilk* 32831



*sunsilk* 32860



All fabrics 120 cm in width

**markilux**

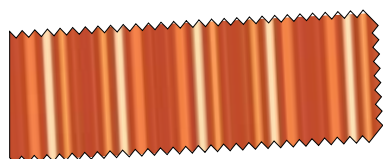
*world of colours: orange*

brilliant luminosity  
smooth surface  
excellent technical properties

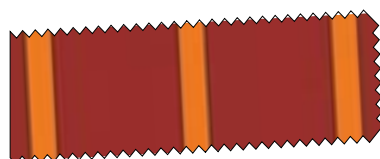
*powerful*



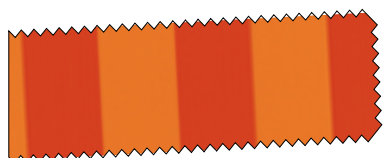
*sunsilk* 32852



*sunsilk* 32823



*sunsilk* 32847



*sunsilk* 32802



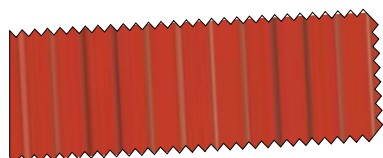
*sunsilk* 32812



*sunsilk* 32853



*sunsilk* 32837



*sunsilk* 32832



*sunsilk* 32814

***sunsilk***

All fabrics 120 cm in width





***sunsilk*** 32833



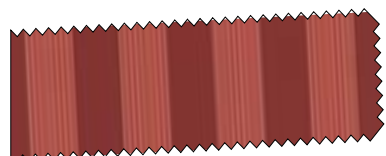
***sunsilk*** 32803



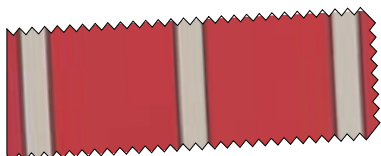
***sunsilk*** 32807



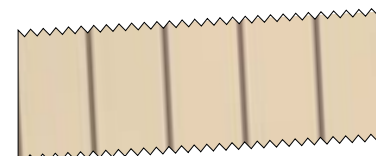
***sunsilk*** 32806



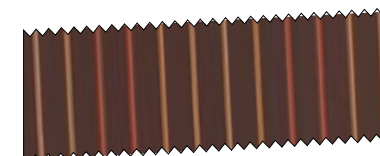
***sunsilk*** 32843



***sunsilk*** 32849



***sunsilk*** 32877



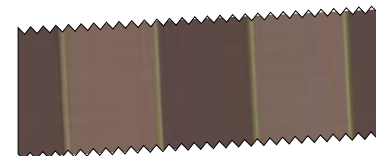
***sunsilk*** 32834



***sunsilk*** 32829



***sunsilk*** 32863



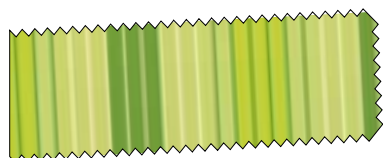
***sunsilk*** 32827



***sunsilk*** 32817



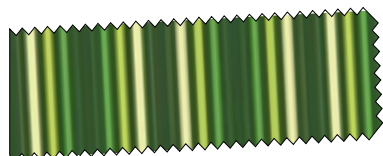
***sunsilk*** 32813



**sunsilk** 32855



**sunsilk** 32815



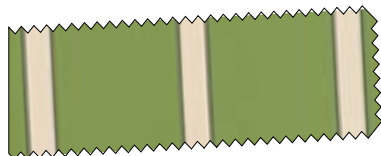
**sunsilk** 32824



**sunsilk** 32836



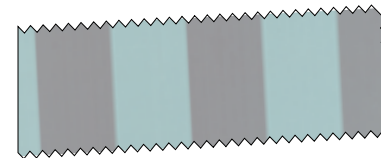
**sunsilk** 32844



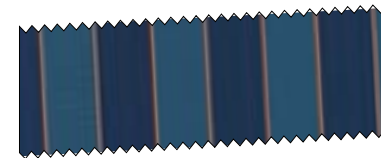
**sunsilk** 32846



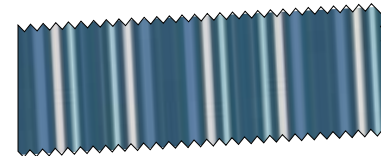
**sunsilk** 32866



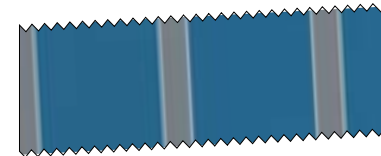
**sunsilk** 32805



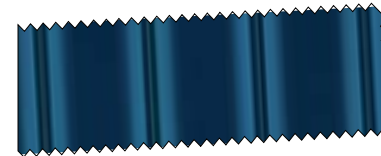
**sunsilk** 32820



**sunsilk** 32825



**sunsilk** 32845



**sunsilk** 32835



**sunsilk** 32865



*world of colours: black / grey*

brilliant luminosity  
smooth surface  
excellent technical properties

*exclusive*



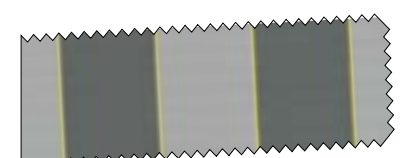
*sunsilk* 32818



*sunsilk* 32848



*sunsilk* 32804



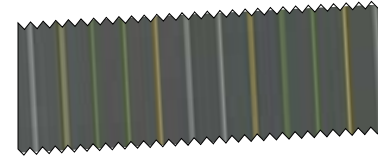
*sunsilk* 32826



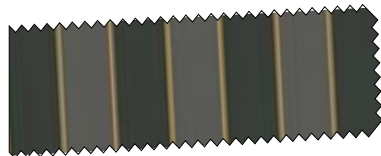
*sunsilk* 32816



*sunsilk* 32854



*sunsilk* 32830



*sunsilk* 32819



*sunsilk* 32828



*sunsilk* 32840





sunvas snc



*world of colours: yellow*

gentle glow  
silky soft surface  
exquisite texture

*summery*



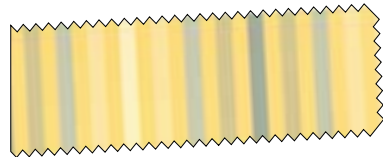
**sunvas snc**

Fabrics in restrained, muted, pastel colours in seven colour families lend sunvas its traditional yet modern character. The textile material with a soft, fluffy touch and gentle colour glow radiates a socially appealing charm.

sunvas snc combines a romantic appearance with an outstanding technical specification: durable, colourfast, resilient and with self-cleaning effect. Tried, tested and certified with the test symbol "self-cleaning - inspired by nature" which was awarded and confirmed by the internationally renowned Institute for Textile Technology and Process Engineering - ITV, Denkendorf.



All fabrics 120 cm in width



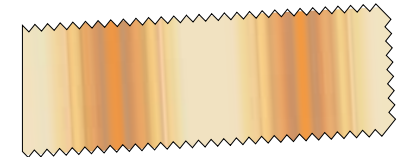
**sunvas** 31511



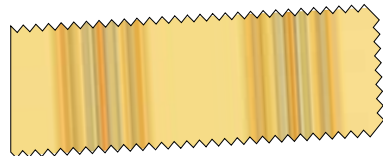
**sunvas** 31571



**sunvas** 31556



**sunvas** 31570



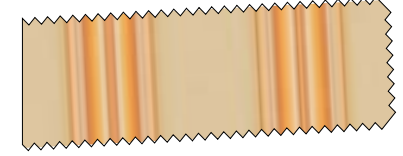
**sunvas** 31520



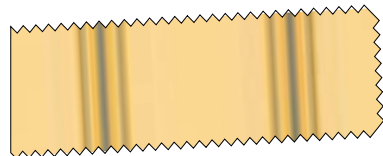
**sunvas** 31591



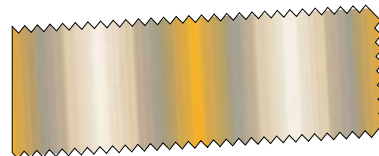
**sunvas** 31551



**sunvas** 31501



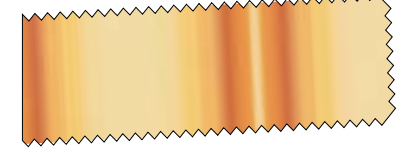
**sunvas** 31581



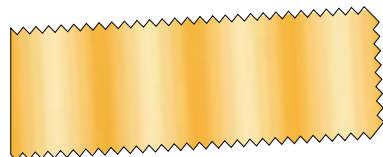
**sunvas** 31574



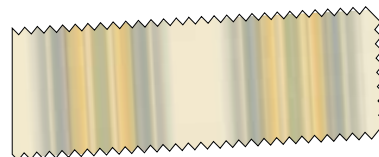
**sunvas** 31552



**sunvas** 31554



**sunvas** 31576



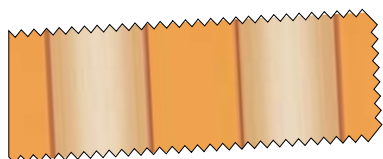
**sunvas** 31569

**markilux**

*world of colours: orange*

gentle glow  
silky soft surface  
exquisite texture

*powerful*



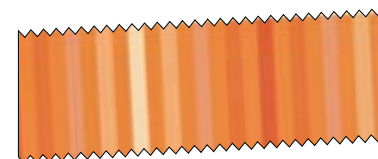
***sunvas*** 31584



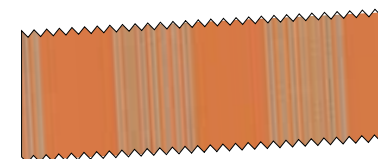
***sunvas*** 31563



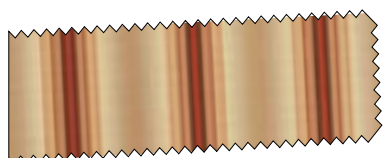
***sunvas*** 31504



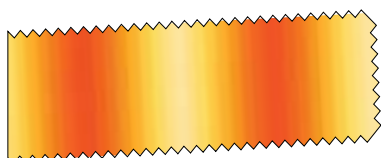
***sunvas*** 31512



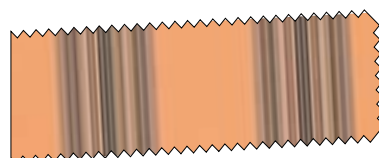
***sunvas*** 31542



***sunvas*** 31579



***sunvas*** 31575



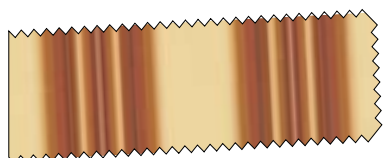
***sunvas*** 31522



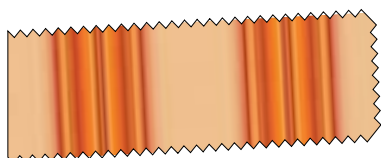
***sunvas*** 31582



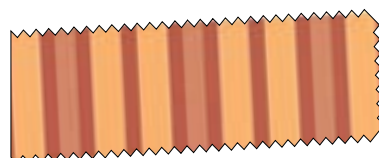
***sunvas*** 31583



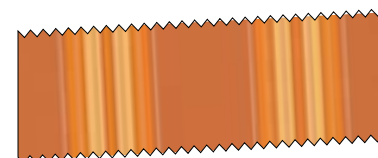
***sunvas*** 31589



***sunvas*** 31502



***sunvas*** 31516



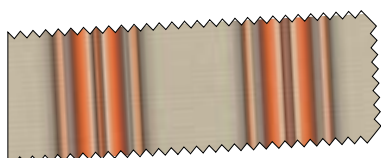
***sunvas*** 31562



***sunvas*** 31549



***sunvas*** 31572



***sunvas*** 31507



*world of colours: red*

gentle glow  
silky soft surface  
exquisite texture

*emotional*



**sunvas** 31553



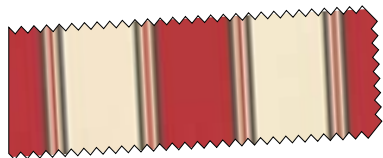
**sunvas** 31503



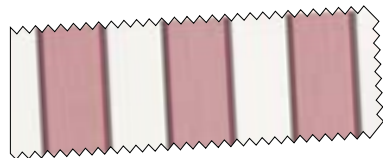
**sunvas** 31573



**sunvas** 31523



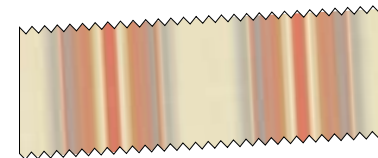
**sunvas** 31566



**sunvas** 31538



**sunvas** 31543



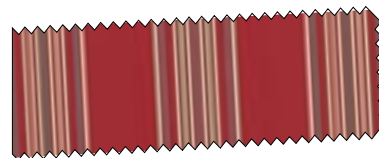
**sunvas** 31568



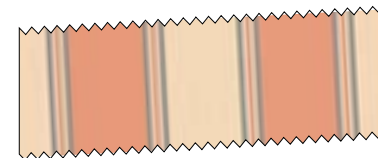
**sunvas** 31544



**sunvas** 31513



**sunvas** 31560



**sunvas** 31565

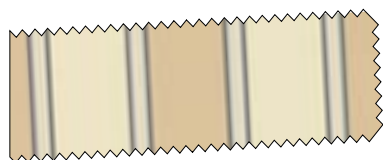
*world of colours: cream*

gentle glow  
silky soft surface  
exquisite texture

*elegant*



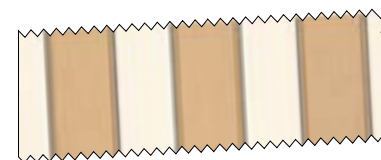
*sunvas* 31587



*sunvas* 31567



*sunvas* 31521



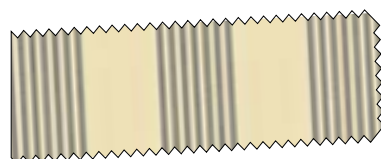
*sunvas* 31537



*sunvas* 31545



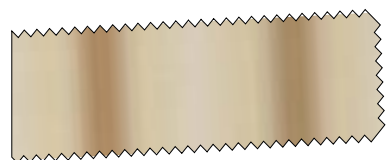
*sunvas* 31585



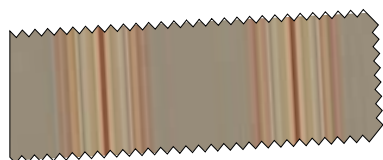
*sunvas* 31541



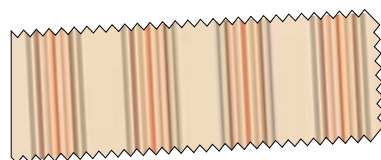
*sunvas* 31517



*sunvas* 31577



*sunvas* 31588



*sunvas* 31547



*sunvas* 31510

***sunvas***

All fabrics 120 cm in width



*world of colours: green*

gentle glow  
silky soft surface  
exquisite texture

*natural*



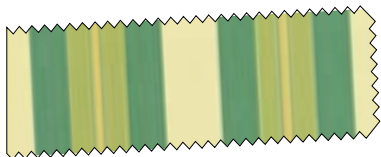
*sunvas* 31546



*sunvas* 31580



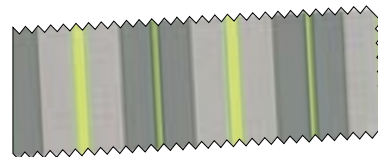
*sunvas* 31526



*sunvas* 31586



*sunvas* 31564



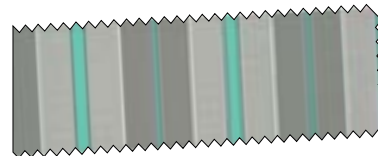
*sunvas* 31531



*sunvas* 31536



*sunvas* 31590



*sunvas* 31533

*world of colours: blue*

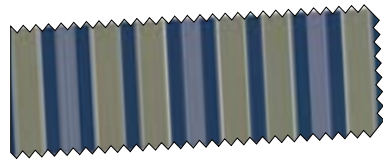
**harmonious**

*world of colours: black / grey*

**exclusive**



**sunvas** 31506



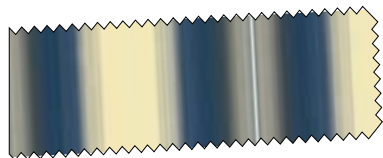
**sunvas** 31515



**sunvas** 31561



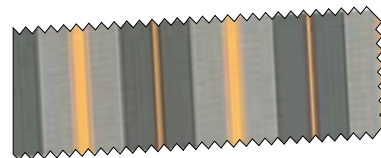
**sunvas** 31558



**sunvas** 31555



**sunvas** 31529



**sunvas** 31532



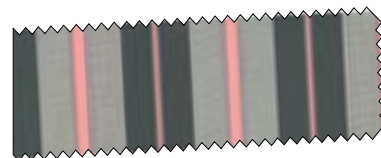
**sunvas** 31519



**sunvas** 31505



**sunvas** 31528



**sunvas** 31534



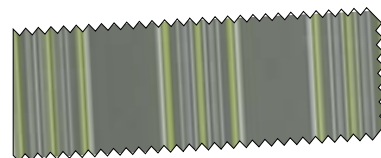
**sunvas** 31548



**sunvas** 31524



**sunvas** 31525



**sunvas** 31559



*world of colours*

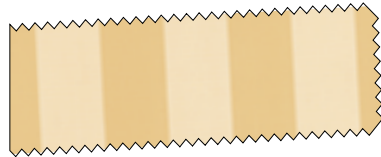
gentle glow  
silky soft surface  
exquisite texture

*colours*

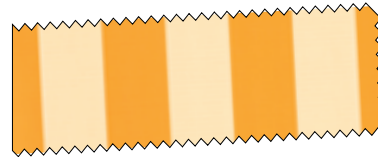
**colours**

This fabric range offers ultramodern patterns in the gently glowing sunvas quality

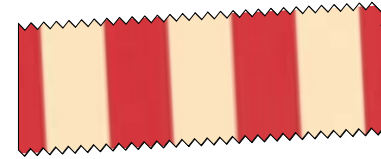
19 classic, timeless blockstripes have been reinterpreted in new colour shades.



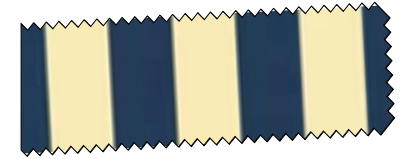
***sunvas*** 31307



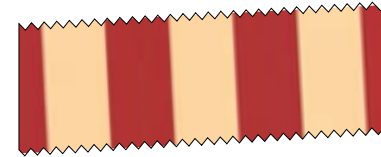
***sunvas*** 31311



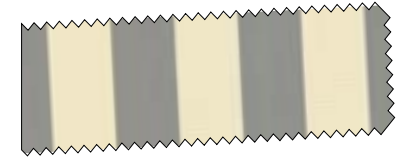
***sunvas*** 31303



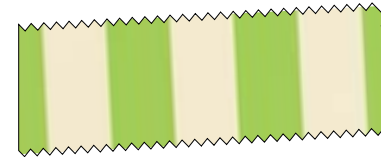
***sunvas*** 31315



***sunvas*** 31313



***sunvas*** 31318



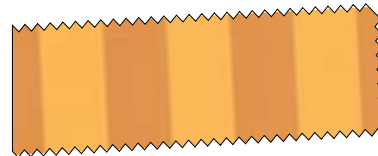
***sunvas*** 31326



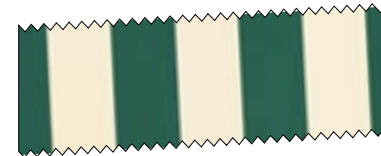
***sunvas*** 31328



***sunvas*** 31317



***sunvas*** 31321



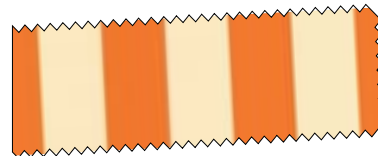
***sunvas*** 31306



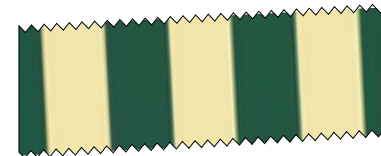
***sunvas*** 31309



***sunvas*** 31327



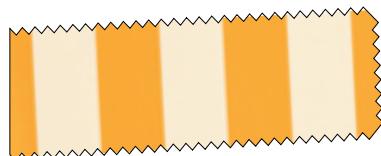
***sunvas*** 31302



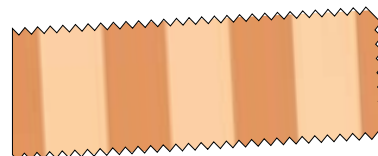
***sunvas*** 31316



***sunvas*** 31308



***sunvas*** 31301



***sunvas*** 31312

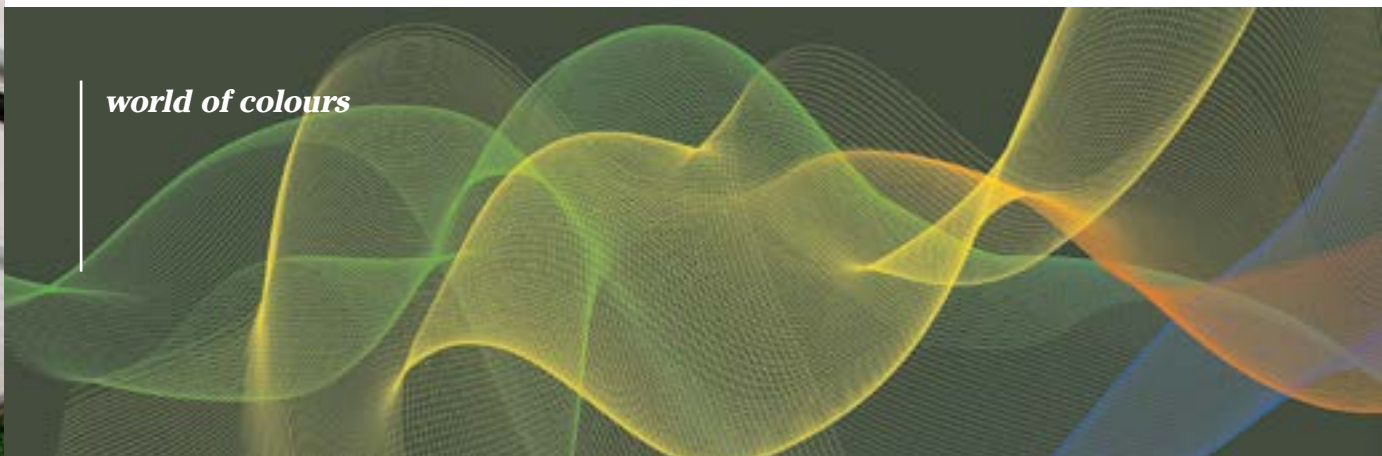


***sunvas*** 31305



## classics

### world of colours



**sunvas** 31109 ◆



**sunvas** 31117

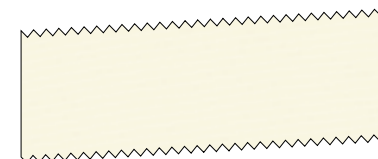


**sunvas** 31114

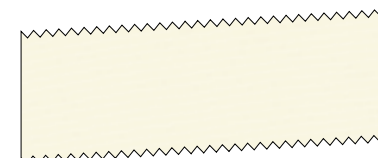
### classics

Classic plain fabrics are always stylistically sure of themselves and easy to mix and match.

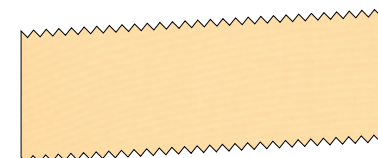
The well appointed range of neutral, elegant plains in the collection is available in both the luminescent sunsilk snc and the gently glowing sunvas snc qualities. Something to suit every taste.



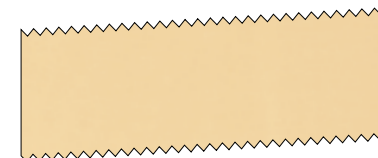
**sunvas** 31009 ◆◆



**sunsilk** 32467



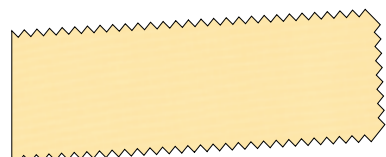
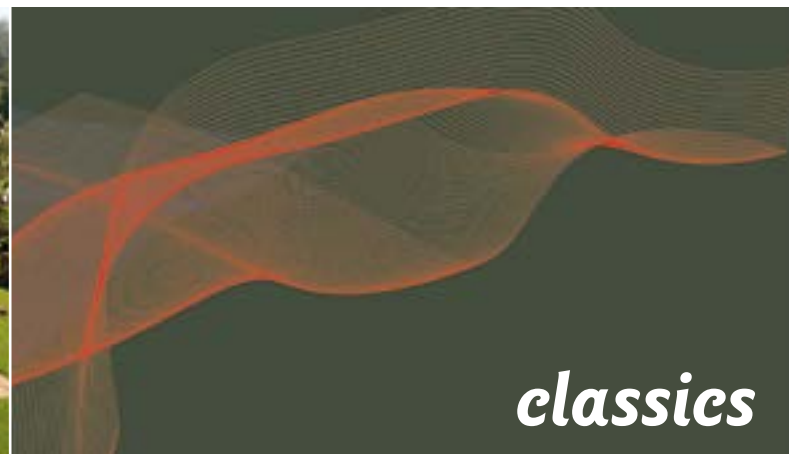
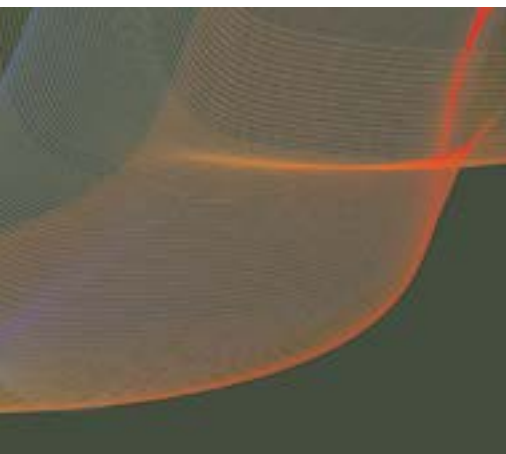
**sunvas** 31017 ▶



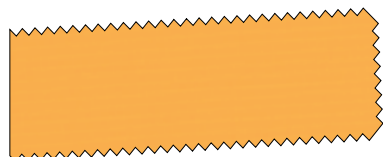
**sunsilk** 32417

◆ also available as widely woven fabrics for the manufacture of seamless covers up to a drop of 250 cm

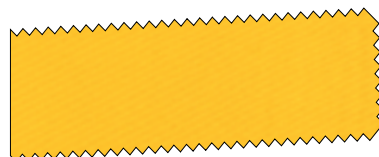




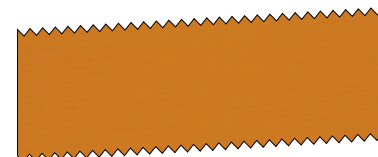
**sunsilk** 32409



**sunsilk** 32401



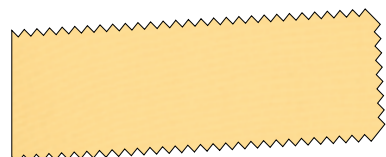
**sunvas** 31011



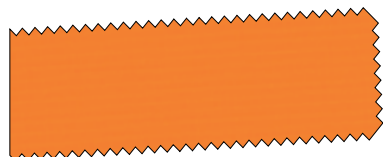
**sunvas** 31041



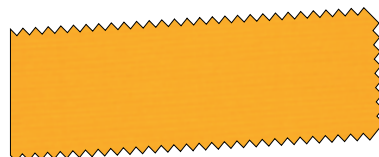
**sunvas** 31003 ▶



**sunvas** 31027



**sunsilk** 32448



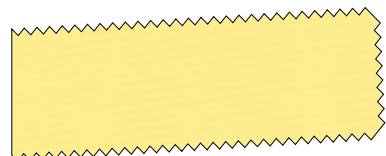
**sunvas** 31021



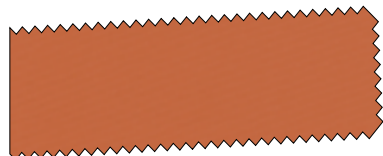
**sunvas** 31002



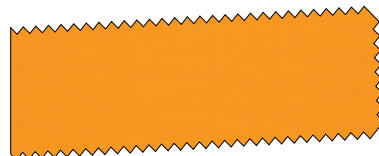
**sunvas** 31013



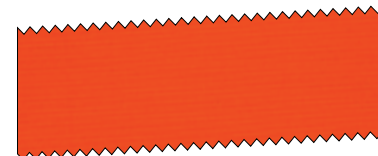
**sunsilk** 32410



**sunvas** 31022 ▶▶



**sunvas** 31031 ▶▶



**sunvas** 31012 ■



**sunvas** 31023 ▶■

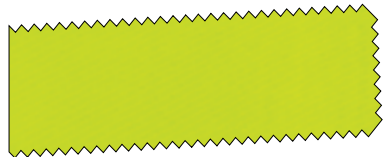
■ also available as widely woven fabrics for the manufacture of seamless covers up to a drop of 320 cm

▶ fabric also available as sunvas perla; see the specials range – sunvas perla

● fabric also available as sunvas transolair; see the specials range – sunvas transolair

**markilux**

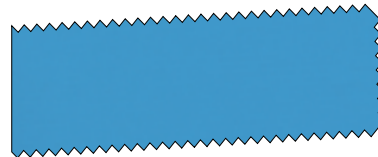
*world of colours*



**sunvas** 31006 ♦



**sunsilk** 32456



**sunsilk** 32440



**sunvas** 31005



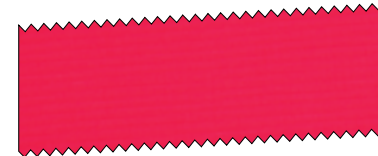
**sunvas** 31016



**sunvas** 31026



**sunsilk** 32443



**sunsilk** 32441



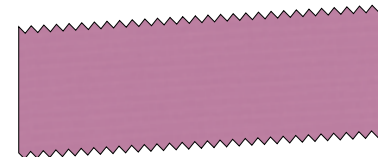
**sunsilk** 32465



**sunvas** 31036 ▶



**sunvas** 31015



**sunsilk** 32442



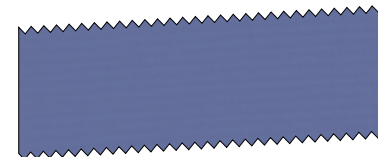
**sunsilk** 32464



**sunvas** 31046



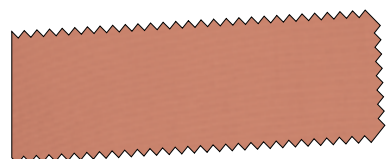
**sunvas** 31025 ■



**sunsilk** 32444

- fabric also available as sunvas transolair; see the specials range – sunvas transolair
- ♦ also available as widely woven fabrics for the manufacture of seamless covers up to a drop of 250 cm
- ▶ fabric also available as sunvas perla; see the specials range – sunvas perla
- also available as widely woven fabrics for the manufacture of seamless covers up to a drop of 320 cm





**sunvas** 31004



**sunvas** 31077



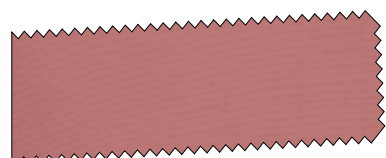
**sunvas** 31057 ▶



**sunvas** 31008 ▶▶



**sunvas** 31018 ▶



**sunvas** 31014



**sunsilk** 32447



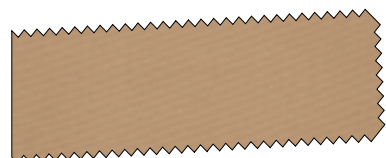
**sunvas** 31067 ▶



**sunsilk** 32414



**sunsilk** 32438 ▶



**sunvas** 31037 ▶▶



**sunsilk** 32437



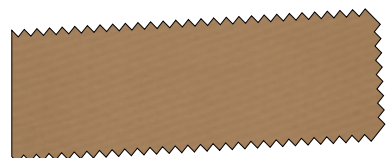
**sunsilk** 32434



**sunsilk** 32439



**sunvas** 31028 ▶▶



**sunvas** 31047



**sunsilk** 32449



**sunvas** 31007 ▶



**sunvas** 31038 ▶▶



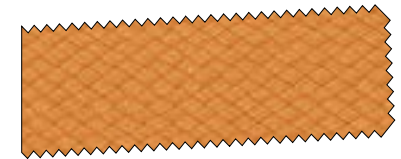
## Braid colours and valance styles

For each cover pattern there is a matching braid colour. However, if you would prefer an alternative colour, please choose from the colour palette shown.

The valance always has the same seam arrangement as the cover as they are both cut from one piece of material. The shape of the valance is symmetrical at both ends. Moreover, the crests and troughs in the valance are adjusted to correspond to the widths of the stripes in the pattern. We cannot guarantee that we can copy the pattern repeat exactly in valances supplied at a later date..



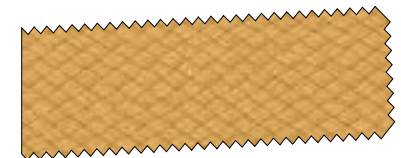
292 01



292 39



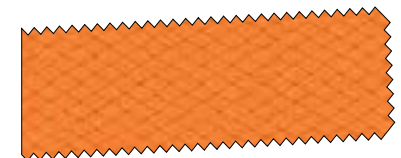
292 21



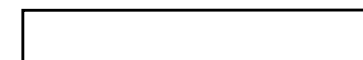
292 10



292 28



292 32

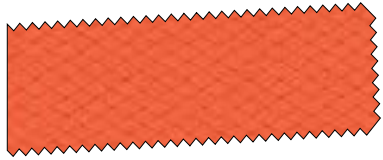


Valance style no. 1



Valance style no. 2





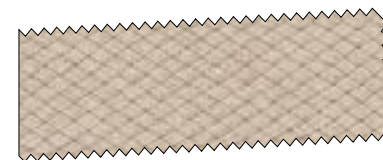
292 24



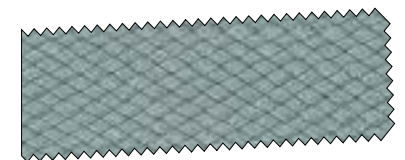
292 42



292 14



292 23



292 47



292 26



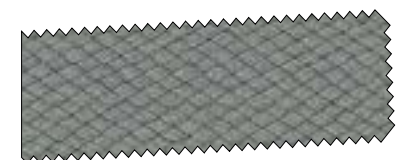
292 66



292 25



292 87



292 33



292 56



292 46



292 91



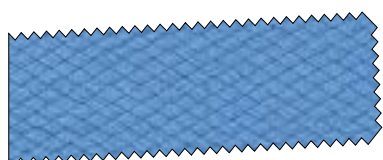
292 38



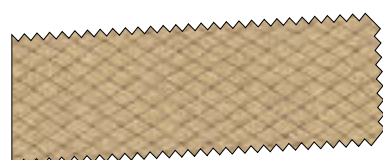
292 65



292 86



292 30



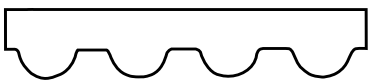
292 41



292 48



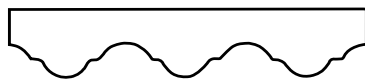
292 49



Valance style no. 3



Valance style no. 4



Valance style no. 5



Valance style no. 6



perfortex

## perfortex

The special fabric for markilux conservatory awnings made from high-tech polyester material in proven sunsilk quality. An additional aluminium coating reflects heat even more effectively, even before it can enter the conservatory.


This light and air-permeable fabric woven, using a special technique, is pleasantly transparent and reduces the possibility of water troughs forming, which would put extra strain on the cover. A high-grade SFC finish (Teflon) offers tried and tested protection from soiling and gives the fabric its water-repellent properties.



**perfortex 33202** upper side of the fabric 



**perfortex 33202** underside of the fabric

 Because of the way the fabric is made, one side has a higher concentration in aluminium pigmentation; during cover manufacture this side is made to face upwards / outwards in order to attain the maximum benefits in heat and light reflection. In the case of fabrics in a lighter colour and especially when seen against the light, it is unavoidable that the aluminium coating shines through and can be seen from the inside.





**perfortex** 33207



**perfortex** 33201



**perfortex** 33211



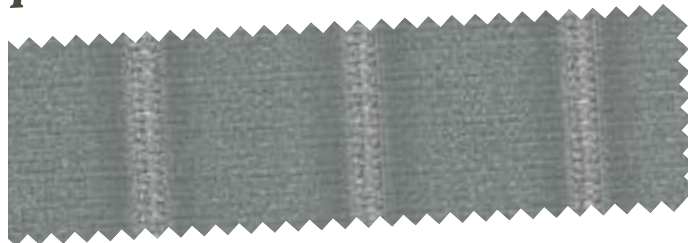
**perfortex** 33237



**perfortex** 33217



**perfortex** 33227



**perfortex** 33218



**perfortex** 33208

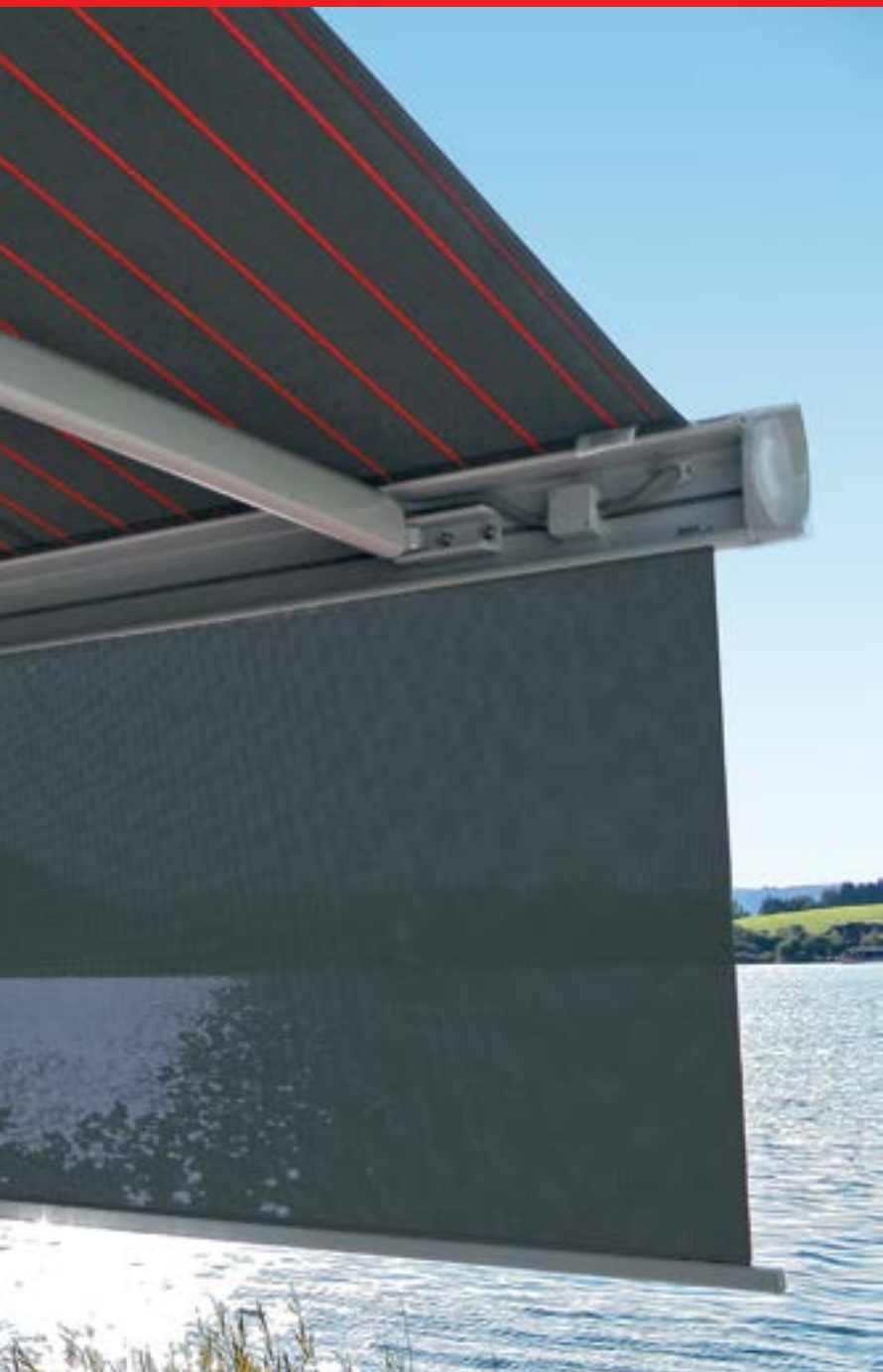
**Good to know:**

Covers using the special, stabilising production method, with seams every 60 cm, have proved their worth when fitted to markilux conservatory awnings, so covers for the markilux 8800 and 8850 are made as standard using this technique. perfortex covers for markilux vertical blinds and awnings are manufactured from fabric panels 120 cm in width and for technical reasons are only available in a stitched finish.

perfortex fabrics are finished with encapsulated aluminium pigmentation on both sides. Due to the special manufacturing technique different concentrations of this finish are found on the upper and underside of the fabrics. During cover manufacture this side is made to face upwards / outwards in order to attain the maximum benefits in heat and light reflection.

In the case of fabrics in a lighter colour and especially when seen against the light, it is unavoidable that the aluminium coating shines through and can be seen from the inside.

**markilux**



sunvas transolair

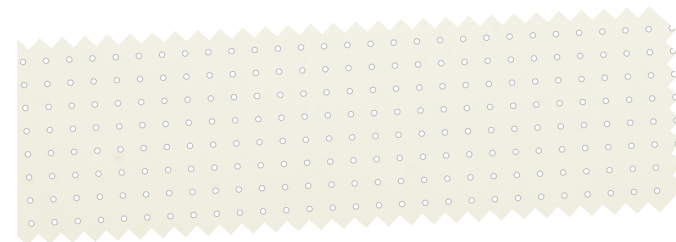
## sunvas transolair – new material, proven technology!

### See-through sun protection fabrics

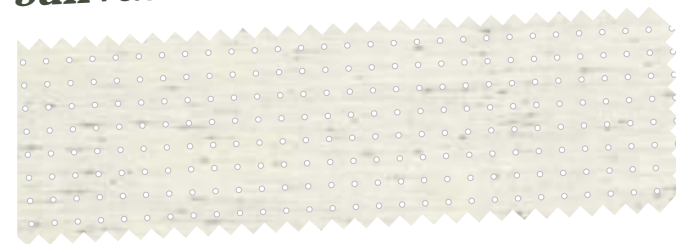
sunvas transolair is the innovative high-tech polyester fabric with special perforating technique and excellent technical characteristics. A number of selected fabrics from the sunvas classics range form the basis of the sunvas transolair fabrics in the same colour. The special perforating technique ensures excellent transparency as well as good light, air and wind permeability.

The breathable nature of the material has further advantages in that it prevents the build-up of a layer of warm air under the material and reduces the risk of water troughs forming.

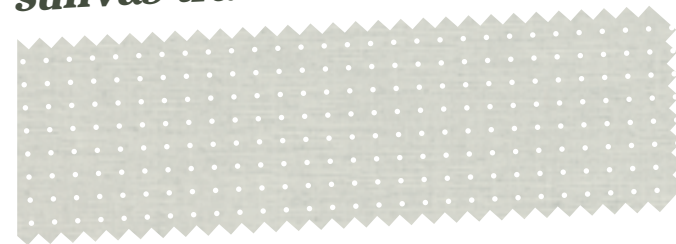
sunvas transolair is especially recommended for use in vertical blinds and conservatory awnings including those with tracfix technology and, of course, in the markilux shadeplus / drop valance. Also available as widely woven fabrics for the manufacture of seamless covers up to a drop of 250 cm.



**sunvas transolair** 33809



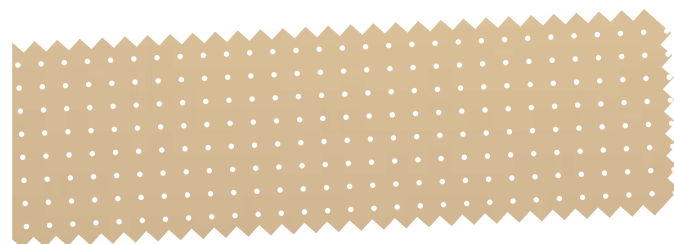
**sunvas transolair** 33849



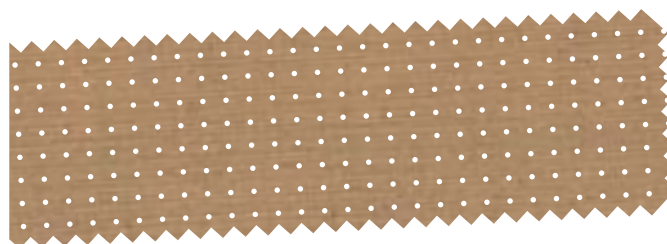
**sunvas transolair** 33827



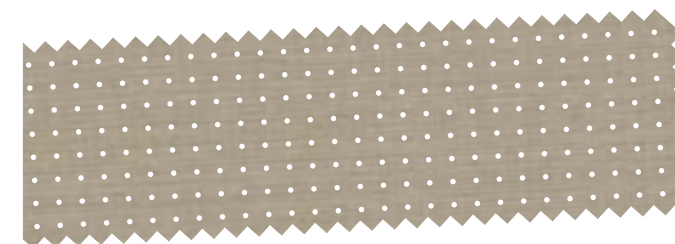




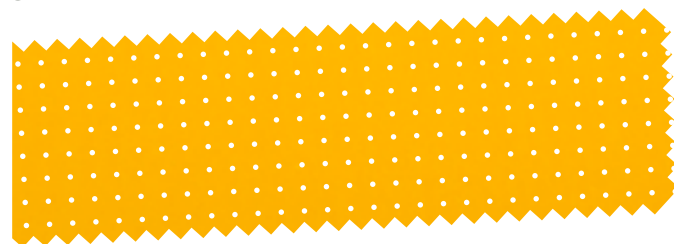
***sunvas transolair*** 33837



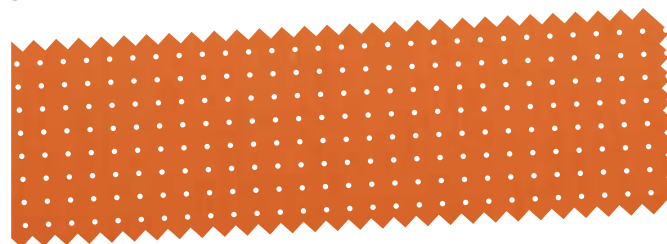
***sunvas transolair*** 33882



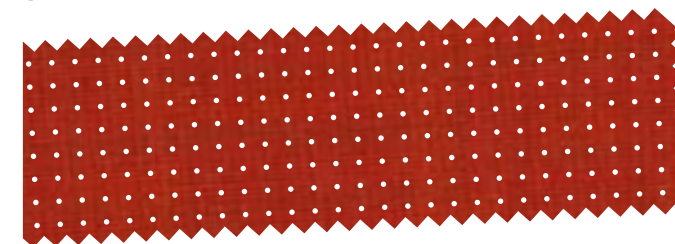
***sunvas transolair*** 33887



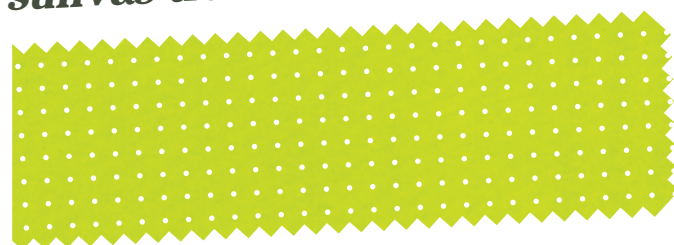
***sunvas transolair*** 33831



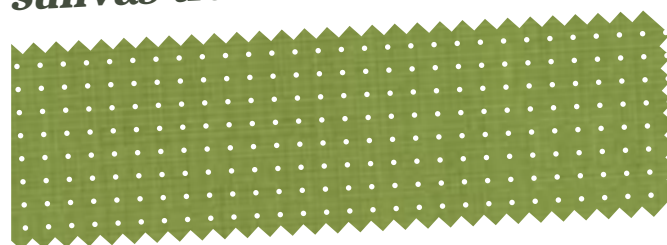
***sunvas transolair*** 33822



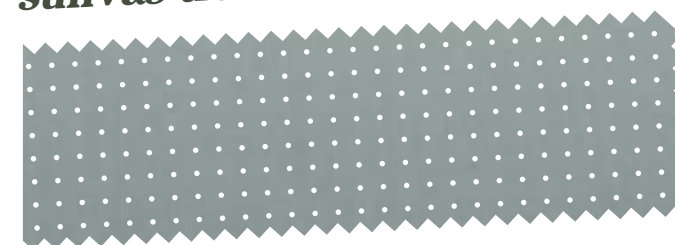
***sunvas transolair*** 33883 \*



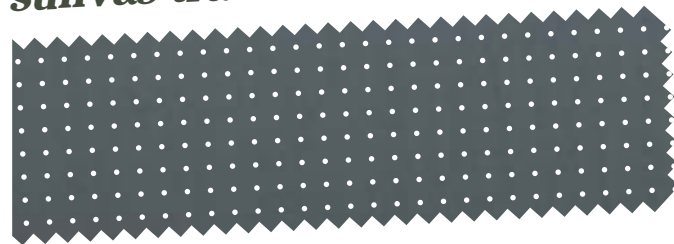
***sunvas transolair*** 33806



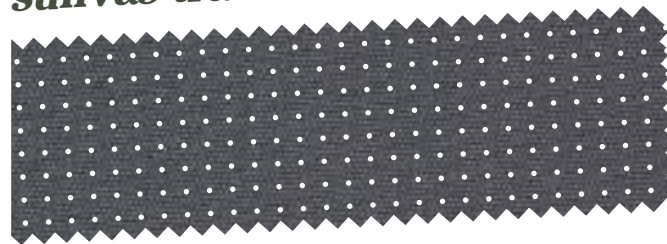
***sunvas transolair*** 33886



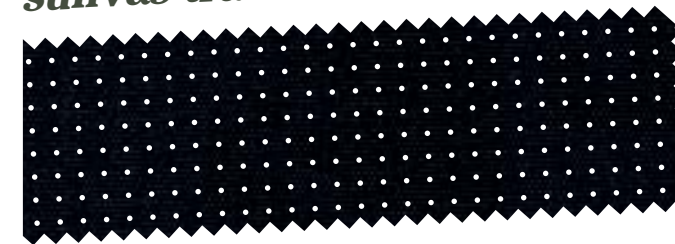
***sunvas transolair*** 33808



***sunvas transolair*** 33818 \*



***sunvas transolair*** 33838 \*



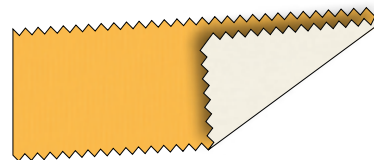
***sunvas transolair*** 33828 \*



perla

## sunsilk perla FR

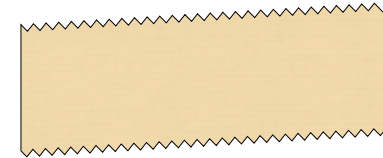
sunsilk perla FR is a high-quality awning fabric based on the innovative, high-tech fabric sunsilk snc. This coated fabric is **waterproof and highly flame retardant** and should be used wherever fire safety regulations need to be observed and protection from rain or sun and a decorative effect is required. In daylight, the radiant colours pass through the white underside of the sunsilk perla FR fabric, which makes it possible to tailor the colour design of the interior space to the specific requirements of the customer but also ensures a bright, friendly atmosphere in the evening.



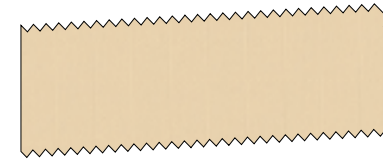
 underside of the fabric



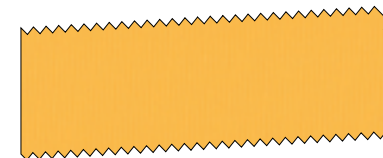
*perla FR* 37467



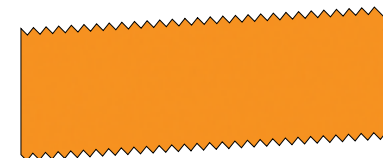
*perla FR* 37407



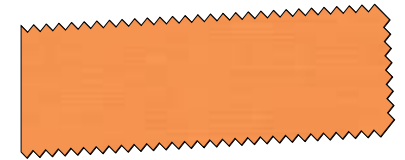
*perla FR* 37417



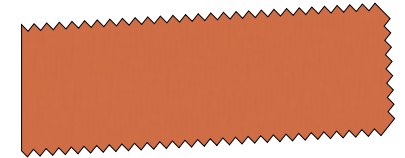
*perla FR* 37401



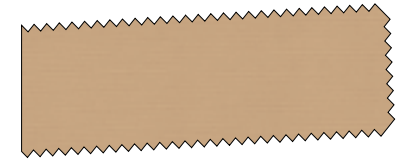
*perla FR* 37411



*perla FR* 37422



*perla FR* 37402



*perla FR* 37427



*perla FR* 37437



*perla FR* 37428



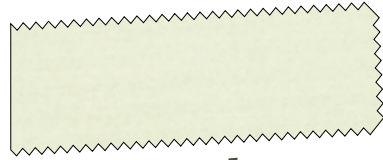
*perla FR* 37418



## sunvas perla

sunvas perla is a high-quality awning fabric based on the innovative, high-tech fabric sunvas snc with its outstanding technical characteristics. This material has a **transparent coating**.

The colour effect of the material is virtually unchanged in comparison with the uncoated version. sunvas perla is **waterproof** and impervious to the effects of the weather and the high-tech material offers optimum protection against both sunshine and inclement weather whilst offering exceptional protection from UV radiation as well (UPF 50+).



*sunvas perla* 37009



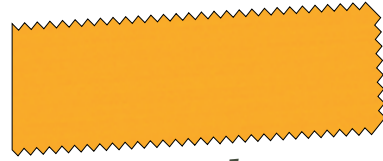
*sunvas perla* 37017



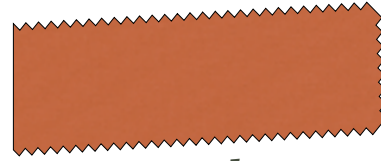
*sunvas perla* 37037



*sunvas perla* 37023



*sunvas perla* 37031



*sunvas perla* 37022



*sunvas perla* 37003



*sunvas perla* 37036



*sunvas perla* 37057



*sunvas perla* 37067



*sunvas perla* 37007



*sunvas perla* 37008



*sunvas perla* 37018

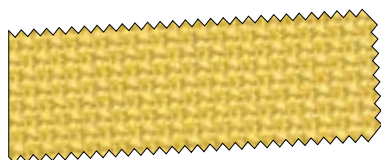


*sunvas perla* 37028

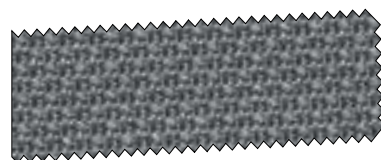


## vuscreen ALU

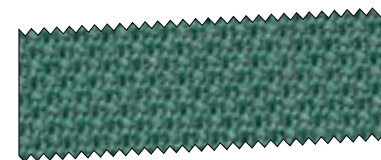
The vuscreen material used to create modern sun and glare protection covers for markilux vertical blinds and awnings is finely perforated and transparent to a limited degree. It protects against reflected light. The encapsulated particles of aluminium on the fibres of this easily-cared-for, high-tech polyester fabric ensure the room temperature remains pleasant by repelling heat energy. Also available as widely woven fabrics for the manufacture of seamless covers up to a drop of 252 cm.



**vuscreen ALU 31701**



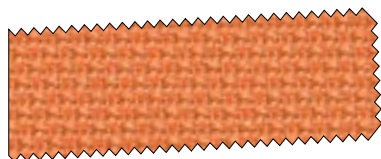
**vuscreen ALU 31708**



**vuscreen ALU 31716**



**vuscreen ALU 31735**



**vuscreen ALU 31702**



**vuscreen ALU 31709**



**vuscreen ALU 31717**



**vuscreen ALU 31737**



**vuscreen ALU 31704**



**vuscreen ALU 31713**



**vuscreen ALU 31718**



**vuscreen ALU 31738**



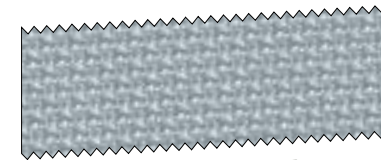
**vuscreen ALU 31707**



**vuscreen ALU 31715**



**vuscreen ALU 31728**



**vuscreen ALU 31768**



## Awning covers – Product characteristics and care

Awning covers are industrially manufactured textile products which serve both a functional and a decorative role. They are high-tech products that meet strict technical requirements. Each production cycle undergoes extensive laboratory tests. Criteria such as water impermeability, rigidity, dirt and water-repellent properties, resistance to tearing and tear propagation, colour fastness and numerous other characteristics are defined, assessed and guaranteed for each fabric type by the manufacturer. Although only first-class, quality controlled fabric is used in production, there are limits to the degree of perfection that can be achieved. Owners of awnings sometimes complain about certain phenomena found in the fabric which cannot be completely excluded, in spite of today's very high technical standards.

### Creases

can appear during the cover making process and when the fabric has been folded. A dark line may become visible at the crease when viewed against the light, especially in the case of light colours. This is because the fibres become kinked when the fabric

is folded so changing the light transmitting qualities of the material (refraction).

### Puckering of the fabric

can appear along the side hems, next to the seams and in the centre of the panel. There is a double layer of fabric at the seams, which are stitched or bonded when flat. As the cover is wound onto the roller the two layers of fabric are forced to assume different diameters thus creating tension within the fabric. The tension exerted by the folding arms and the weight of the roller and/or front profile can exacerbate this effect. Puckering can also develop if a water trough forms during heavy rainfall.

### Water impermeability / resistance to rain

Solar protection fabrics are impregnated with a water-repellent finish and, if properly cared for and used at a pitch of at least 14° (to the horizontal), remain impervious to water during short, light rainfall. During prolonged and/or heavy rainfall the awning must not be extended or should be retracted to prevent any damage. If the cover has become wet, the awning must

be extended again at the earliest opportunity so that it can dry to prevent marking of the fabric.

### Tension-induced stretching of the side hems

In most cases an active tensioning system keeps the cover taut almost permanently. Although seams and hems provide reinforcement, they also have to withstand the most strain. When the cover is rolled up the seams and hems roll up on themselves, which increases the pressure and tension even more. They are therefore exposed to considerable tension and this can cause them to stretch slightly. As a consequence the side hems may sag slightly when the awning is extended. Source: ITRS (BKTex)

In the case of both stitched and bonded covers all seams are arranged symmetrically. This ensures that the awning runs smoothly and that it is aesthetically pleasing to the eye, as - in the case of striped fabrics - the pattern on both sides of the cover finishes evenly.

### Caring properly for your blind or awning cover

So that you may have long and pleasurable use from your markilux awning cover here are a few tips regarding its care: Dust can best be removed when dry by means of a soft brush. Leaves or similar debris should be removed immediately. Small stains should be removed using lukewarm water and a commercially accepted, preferably liquid, detergent suitable for delicate fabrics (5% soap solution, water temperature max. 30°C). Rinse thoroughly with water. Comprehensive tips for the cleaning and care of exterior solar protection fabrics can be found in the guidelines laid down by the Industrial Association for Technical Textiles - Shutters - Solar Protection (ITRS e.V.).

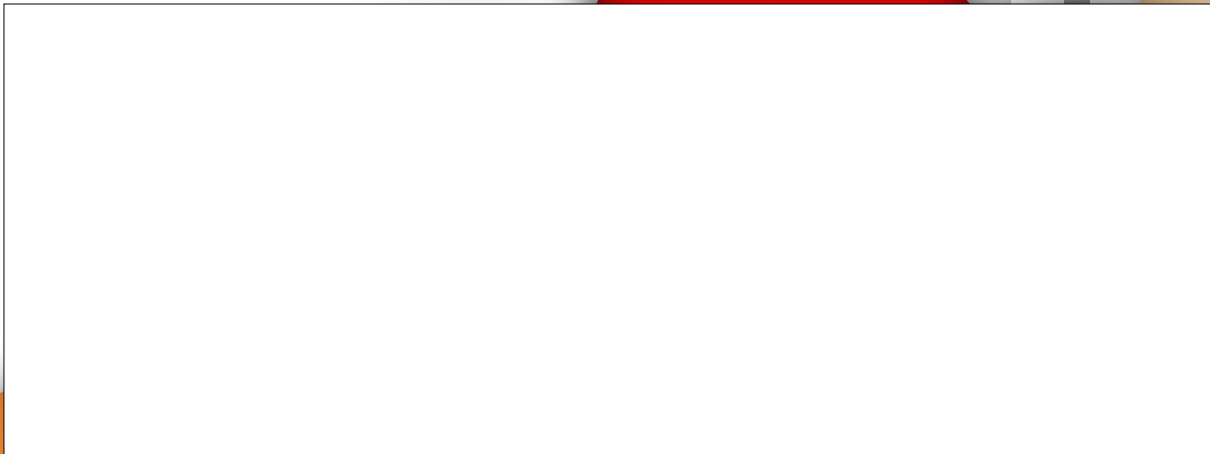
### Other important information relating to external solar protection fabrics

Small imperfections such as knots, uneven yarn thicknesses, the occasional broken yarn, waviness or uneven rolling up characteristics as well as signs of fabric stretch - especially in the region of hem or panel seam -

cannot always be avoided in spite of the state-of-the-art manufacturing processes used. Furthermore, traces of handling such as slight creases, which appear as lines in the fabric when held against the light, are also unavoidable. The intrinsic weight of the fabric may cause it to sag; this effect is exacerbated when the awning is wet. We guarantee that the above phenomena will neither have a detrimental effect on the service life of the fabric nor affect the functionality of the awning. In this regard we make reference to the guidelines laid down by the Industrial Association for Technical Textiles - Shutters - Solar Protection (ITRS e.V.).

Detailed instructions for the blind or awning owner, containing all important information with regard to their operation, care and maintenance, are included with every awning delivery. Source: ITRS (BKTex)

**markilux**



7609502 02/16 · We reserve the right to make  
technical modifications  
without giving prior notice.

***markilux***